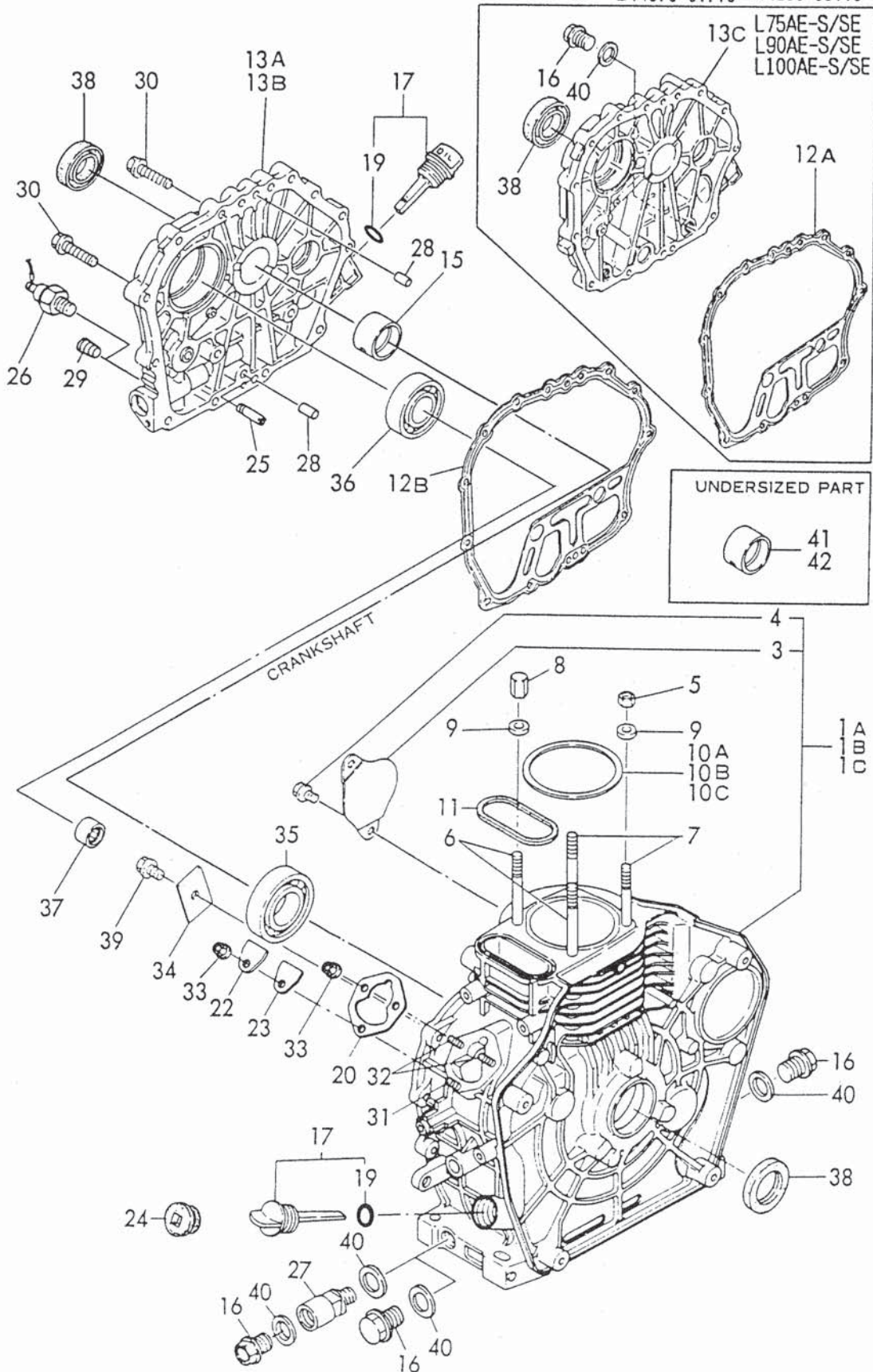


Fig. **29** CYLINDER BLOCK

SPEC. CODE
 D14571-01100 D14670-01700
 D14671-01100 D14689-01700
 D14586-01500 D14470-01800
 D14670-01500 D14650-02100
 D14680-01500 D14280-39100
 D14370-01710 D14280-39110



91.07.02

+-----+
I 1F03 I
I (1F02) I
+-----+
Y00R3981

(29) CYLINDER BLOCK

(A)=L75AE-D/DE (D)=L75AE-S/SE
(B)=L90AE-D/DE (E)=L90AE-S/SE
(C)=L100AE-D/DE (F)=L100AE-S/SE

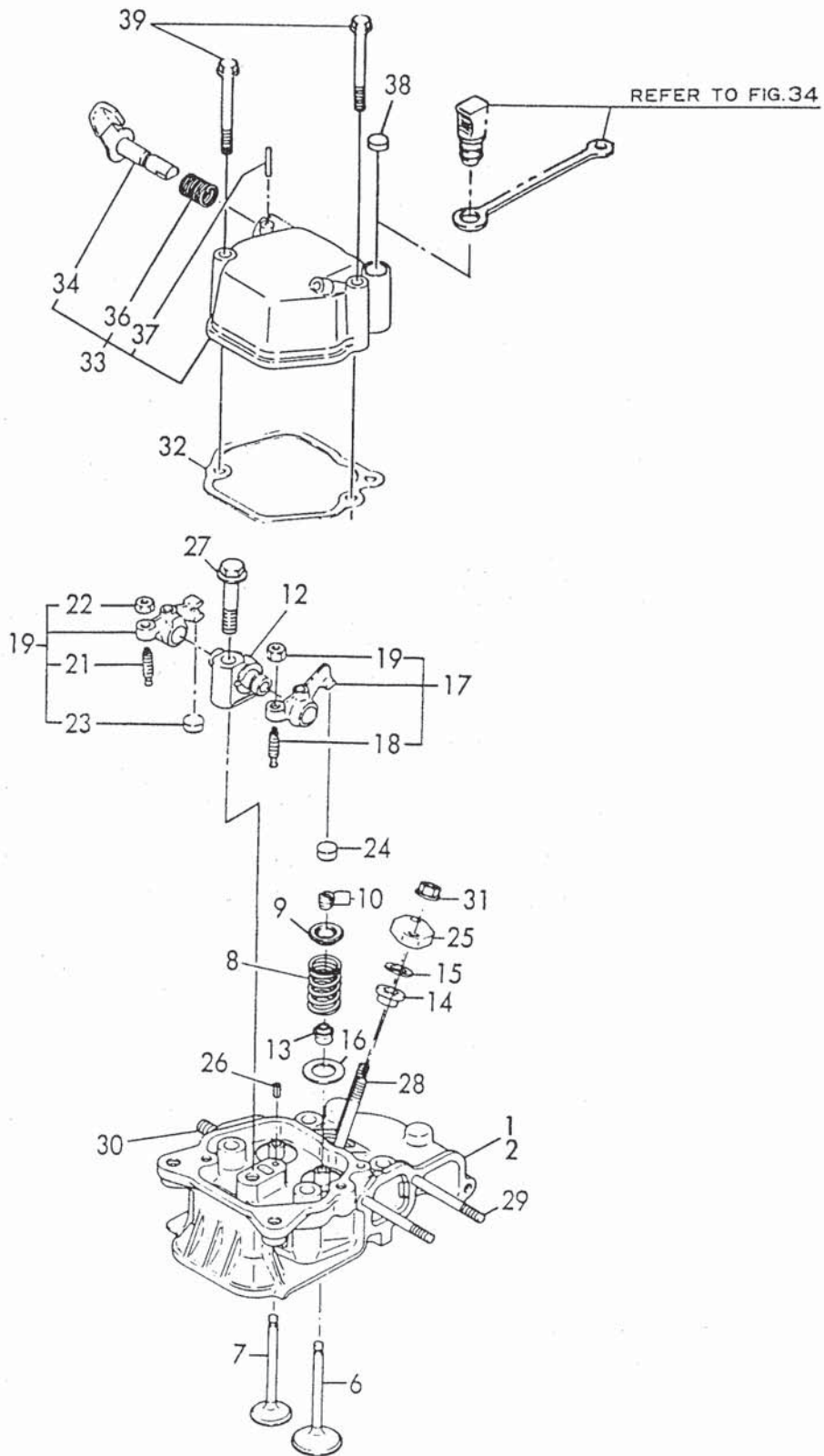
REF. NO.	LEV. 0	PART NO.	DESCRIPTION	-----Q'TY-----						I	P/U	A	R
				(A)	(B)	(C)	(D)	(E)	(F)				
1A	.	714571-01560	BLOCK ASSY, CYLINDER	1			1						
1B	.	714671-01560	BLOCK ASSY, CYLINDER		1			1					
1C	.	714970-01560	BLOCK ASSY, CYLINDER			1					1		
3	..	114350-01700	COVER, STARTER	1	1	1	1	1	1	1			
4	..	26106-100122	BOLT M10X 12 PLATED	2	2	2	2	2	2	2			
5	.	105025-01220	NUT 10	2	2	2	2	2	2	2			
6	.	114650-01230	STUD, CYL. HEAD	2	2	2	2	2	2	2			
7	.	114650-01240	STUD, CYL. HEAD	2	2	2	2	2	2	2			
8	.	114650-01250	NUT 10	2	2	2	2	2	2	2			
9	.	114650-01260	WASHER	4	4	4	4	4	4	4			
10A	.	114550-01340	GASKET, CYL. HEAD	1			1						
10B	.	114650-01340	GASKET, CYL. HEAD		1			1					
10C	.	114970-01340	GASKET, CYL. HEAD			1					1		
11	.	114650-01380	O-RING	1	1	1	1	1	1	1			
12A	.	114650-01411	GASKET, CRANK CASE				1	1	1				
12B	.	114650-01412	GASKET, CRANK CASE	1	1	1							
13A	.	114660-01470	COVER (D), CRANK CASE	1	1	1							
13B	.	114554-01451	COVER (DP), CRANKCASE	1	1	1						(X)	
13C	.	114650-01452	COVER (S), CRANK CASE				1	1	1				
15	..	114650-02100	BEARING, MAIN	1	1	1	1	1	1	1			
16	.	105425-01690	PLUG M16	2	2	2	2	2	2	2			
17	..	160910-01740	CAP, W/LUB.OIL GAUGE	2	2	2	2	2	2	2			
19	..	24311-000180	O-RING 1A P-18.0	2	2	2	2	2	2	2			
20	.	114250-01800	SHIM SET	1	1	1	1	1	1	1			
22	.	114250-01830	COVER, INSPEC.WINDOW	1	1	1	1	1	1	1			
23	.	114250-01840	GASKET	1	1	1	1	1	1	1			
24	.	160110-01870	PLUG, RUBBER W/SCREW	1	1	1	1	1	1	1			
25	.	114250-35150	PIPE, L.O. INLET	1	1	1							
26	.	183250-39450	SWITCH, OIL PRESSURE	1	1							(Y)	
27	.	183279-08350	NIPLE		1							(H)	
28	.	22312-080120	PARALLEL PIN 8X12	2	2	2	2	2	2	2			
29	.	23871-010000	PLUG PT1/8, SCREW	1	1	1	1	1	1	1			
30	.	26106-080352	BOLT M 8X 35 PLATED	16	16	16	16	16	16	16			
31	.	26226-060182	STUD M 6X 18 PLATED	1	1	1	1	1	1	1			
32	.	26226-060222	STUD M 6X 22 PLATED	2	2	2	2	2	2	2			
33	.	26366-060002	NUT M 6	3	3	3	3	3	3	3			
34	.	114250-02030	RETAINER, BEARING	1	1	1	1	1	1	1			
35	.	114650-02150	BALL BEARING	1	1	1	1	1	1	1			
36	.	24101-062070	BALL BEARING	1	1	1	1	1	1	1			
37	.	24162-152112	NEEDLE BEARING	1	1	1	1	1	1	1			
38	.	24423-355008	SEAL, OIL	2	2	2	2	2	2	2			
39	.	26106-080122	BOLT M 8X 12 PLATED	1	1	1	1	1	1	1			
40	.	43400-500490	SEAL WASHER 16	2	2	2	2	2	2	2			
41	.	114650-02200	MAIN BEARING US=0.25	1	1	1	1	1	1	1		(#)	
42	.	114650-02210	MAIN BEARING US=0.50	1	1	1	1	1	1	1		(#)	

----- REMARKS -----

- I (Y) FOR L75AE/90AE-DGMO/DEGMO
- I (H) FOR L90AE-DEPAC
- I (#) UNDERSIZED PARTS
- I (X) FOR L75AE/90AE/100AE-D(E)P

Fig. 30 CYLINDER HEAD & BONNET

SPEC. CODE
D14550-11100
D14650-11100
D14650-11200
D14652-11210



+-----+
 I 1F04 I
 I(1F02)I
 +-----+
 YOOR3981

(30) CYLINDER HEAD & BONNET

91.07.02

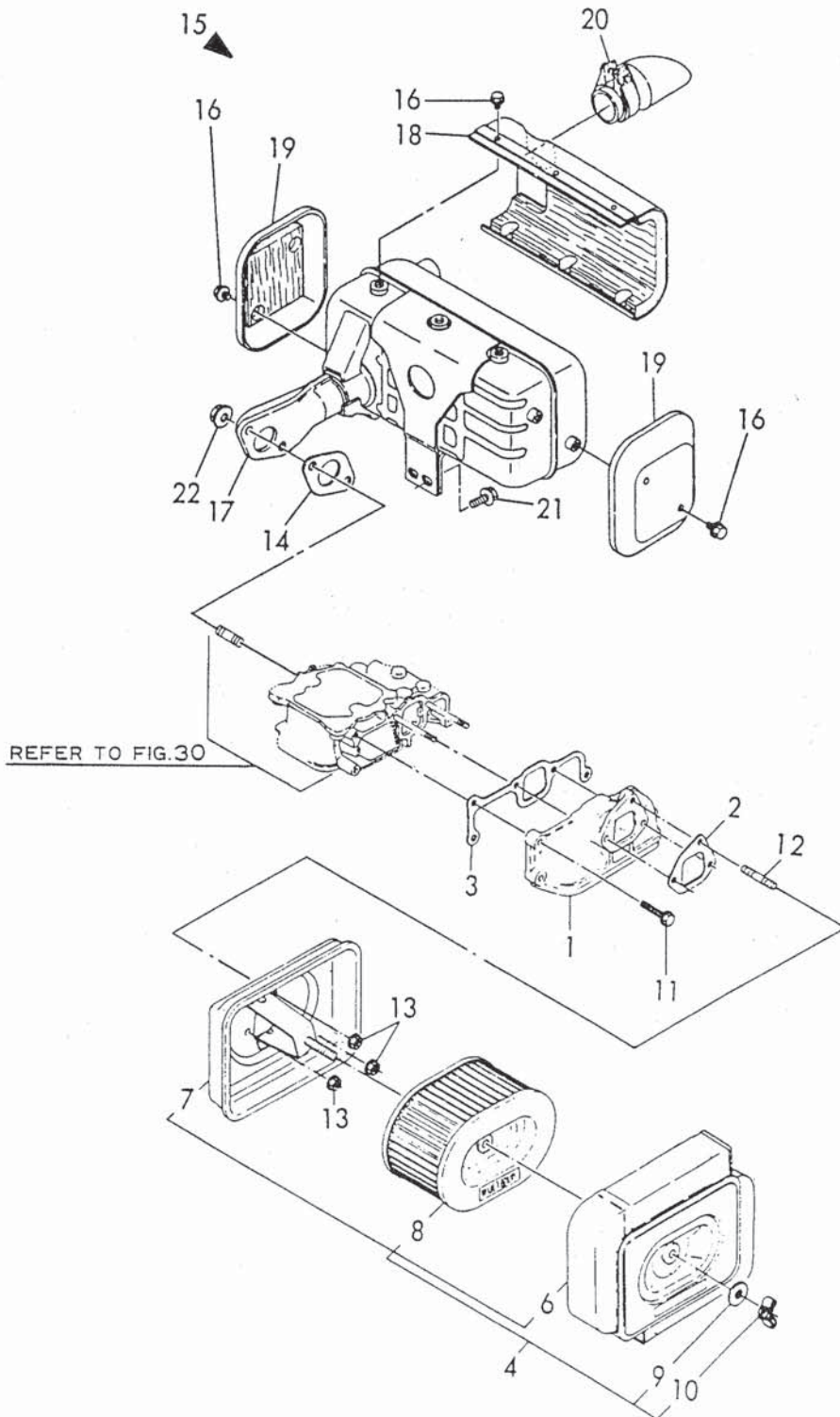
(A)=L75AE-D/DE (D)=L75AE-S/SE
 (B)=L90AE-D/DE (E)=L90AE-S/SE
 (C)=L100AE-D/DE (F)=L100AE-S/SE

REF. NO.	LEV. 0	PART NO.	DESCRIPTION	-----Q'TY-----						I P/U A R
				(A)	(B)	(C)	(D)	(E)	(F)	
1	.	114550-11010	HEAD ASSY, CYLINDER	1			1			
2	.	114650-11010	HEAD ASSY, CYLINDER		1	1		1	1	
6	.	114650-11100	VALVE, SUCTION	1	1	1	1	1	1	
7	.	114654-11110	VALVE, EXHAUST	1	1	1	1	1	1	
8	.	114650-11121	SPRING, VALVE	2	2	2	2	2	2	
9	.	119620-11180	RETAINER, SPRING	2	2	2	2	2	2	
10	.	27310-070001	COTTER 7	2	2	2	2	2	2	
12	.	114650-11261	SUPPORT, ROCKER ARM	1	1	1	1	1	1	
13	.	114650-11340	SEAL, VALVE STEM	2	2	2	2	2	2	
14	.	114250-11460	GASKET, NOZZLE	1	1	1	1	1	1	
15	.	114350-11470	SPACER, NOZZLE	1	1	1	1	1	1	
16	.	114650-11600	WASHER	2	2	2	2	2	2	
17	.	114650-11652	ARM ASSY, INTAKE	1	1	1	1	1	1	
18	..	114250-11240	SCREW, VALVE ADJUST.	1	1	1	1	1	1	
19	..	26756-060002	LOCK NUT M 6 PLATED	1	1	1	1	1	1	
20	.	714670-11660	ARM ASSY, EXHAUST	1	1	1	1	1	1	
21	...	114250-11240	SCREW, VALVE ADJUST.	1	1	1	1	1	1	
22	...	26756-060002	LOCK NUT M 6 PLATED	1	1	1	1	1	1	
23	..	104211-11370	CAP, VALVE	1	1	1	1	1	1	
24	.	104211-11370	CAP, VALVE	1	1	1	1	1	1	
25	.	114250-11900	RETAINER, NOZZLE	1	1	1	1	1	1	
26	.	22351-040008	SPRING PIN 4X 8	1	1	1	1	1	1	
27	.	26106-100552	BOLT M10X 55 PLATED	1	1	1	1	1	1	
28	.	26226-060502	STUD M 6X 50	2	2	2	2	2	2	
29	.	26226-060752	STUD M 6X 75	2	2	2	2	2	2	
30	.	26226-080202	STUD M 8X 20 PLATED	2	2	2	2	2	2	
31	.	26366-060002	NUT M 6	2	2	2	2	2	2	
32	.	114650-11310	GASKET, BONNET	1	1	1	1	1	1	
33	.	114650-11950	BONNET ASSY, HEAD	1	1	1	1	1	1	
I 33-1	.	114650-11951	BONNET ASSY, HEAD	1	1	1	1	1	1	N
(A=X)										
34	..	114250-03591	SHAFT ASSY, DECOMP.	1	1	1	1	1	1	
36	..	114250-03640	SPRING	1	1	1	1	1	1	
37	..	22312-030160	PARALLEL PIN 3X16	1	1	1	1	1	1	
38	.	129100-61850	PLUG (12)	1	1	1				(Y)
39	.	26106-060702	BOLT M 6X 70 PLATED	2	2	2	2	2	2	

----- REMARKS -----
 I (Y) FOR L75AE/90AE/100AE-D(E)P

Fig. 31 AIR CLEANER & MUFFLER

SPEC. CODE
D14650-12100
D14678-13100
D14685-13100



+-----+
 I 1F05 I
 I(1F02)I
 +-----+
 YOOR3981

(31) AIR CLEANER & MUFFLER

91.07.02

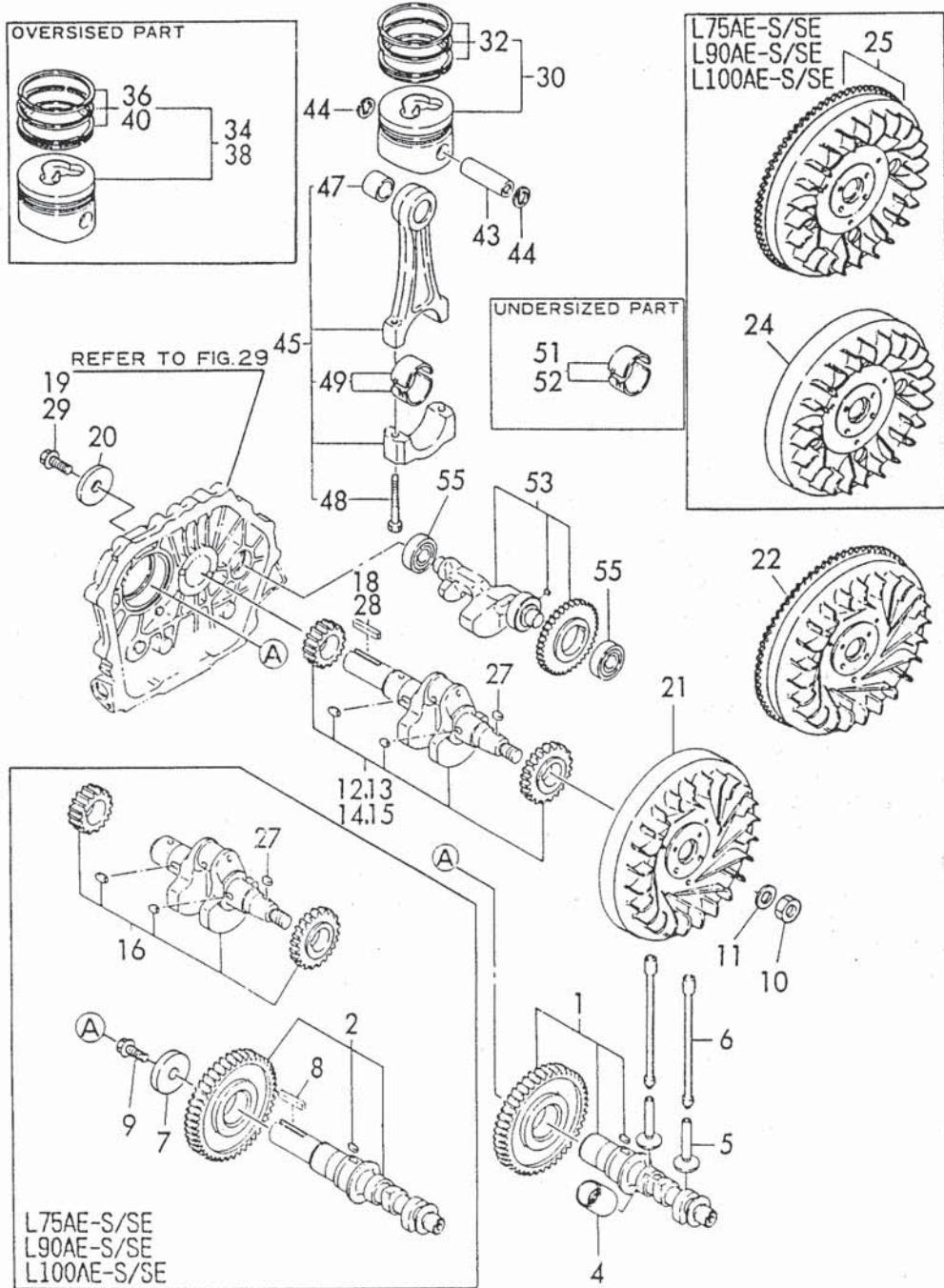
(A)=L75AE-D/DE (D)=L75AE-S/SE
 (B)=L90AE-D/DE (E)=L90AE-S/SE
 (C)=L100AE-D/DE (F)=L100AE-S/SE

REF. NO.	LEV. 0	PART NO.	DESCRIPTION	-----Q'TY-----						I	P	U	A	R
				(A)	(B)	(C)	(D)	(E)	(F)					
1	.	114650-12020	PIPE, AIR INTAKE	1	1	1	1	1	1					
2	.	114650-12210	GASKET, AIR CLEANER	1	1	1	1	1	1					
3	.	114650-12300	GASKET, AIR INTAKE	1	1	1	1	1	1					
4	.	714650-12560	CLEANER ASSY, AIR	1	1	1	1	1	1					
6	...	114650-12520	COVER, AIR CLEANER	1	1	1	1	1	1					
7	...	114650-12530	CASE, AIR CLEANER	1	1	1	1	1	1					
8	...	114650-12590	ELEMENT W/PRE-FILTER	1	1	1	1	1	1					
9	...	114252-12560	WASHER, SEAL	1	1	1	1	1	1					
10	..	114252-12550	WING NUT M8	1	1	1	1	1	1					
11	.	26106-060252	BOLT M 6X 25 PLATED	3	3	3	3	3	3					
12	.	26226-060142	STUD M 6X 14 PLATED	1	1	1	1	1	1					
13	.	26366-060002	NUT M 6	3	3	3	3	3	3					
14	.	114650-13200	GASKET, MUFFLER	1	1	1	1	1	1					
15	.	114970-13550	MUFFLER ASSY	1	1	1	1	1	1					
16	..	160260-01580	BOLT M 6X 6	10	10	10	10	10	10					
17	..	114970-13560	MUFFLER	1	1	1	1	1	1					
18	..	114970-13700	COVER(A), MUFFLER	1	1	1	1	1	1					
19	..	114970-13710	COVER, MUFFLER	2	2	2	2	2	2					
20	.	114658-13800	EXTENSION, EXH.	1	1	1	1	1	1					(#)
21	.	26106-080162	BOLT M 8X 16 PLATED	2	2	2	2	2	2					
22	.	26366-080002	NUT 8	2	2	2	2	2	2					

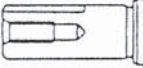
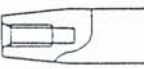


----- REMARKS -----
 I (#) L75AE/90AE/100AE-D(E)TM/S(E)TM
 I & L75AE/L90AE-D(E)GMO

Fig. **32** CRANKSHAFT, PISTON & CAMSHAFT

SPEC. CODED14971-21100 D14689-21700
 D14970-14100 D14970-21500 D14550-22100
 D14980-14100 D14971-21500 D14560-22100
 D14586-21100 D14980-21500 D14650-22100
 D14688-21100 D14981-21500 D14660-22100
 D14688-21110 D14388-21700 D14650-23100
 D14689-21100 D14680-21700 D14970-28100
 D14980-22100 D14970-22100



L75AE-D/L90AE-D/L100AE-D
 CRANK SHAFT

Ref. No.	MAGNIFIED AXIAL END	SCREW SIZE	KEY SIZE	Ref. No.	MAGNIFIED AXIAL END	SCREW SIZE
12		5/16-24UNF	6.3x50	14		5/16-24UNF
13		M8x1.25	7x14	15		1"-14UNF

+-----+
 I 1F06 I
 I (1F02) I
 +-----+
 YOOR3981

(32) CAM/CRANK SHAFT & PISTON/ROD

91.07.02

(A)=L75AE-D/DE (D)=L75AE-S/SE
 (B)=L90AE-D/DE (E)=L90AE-S/SE
 (C)=L100AE-D/DE (F)=L100AE-S/SE

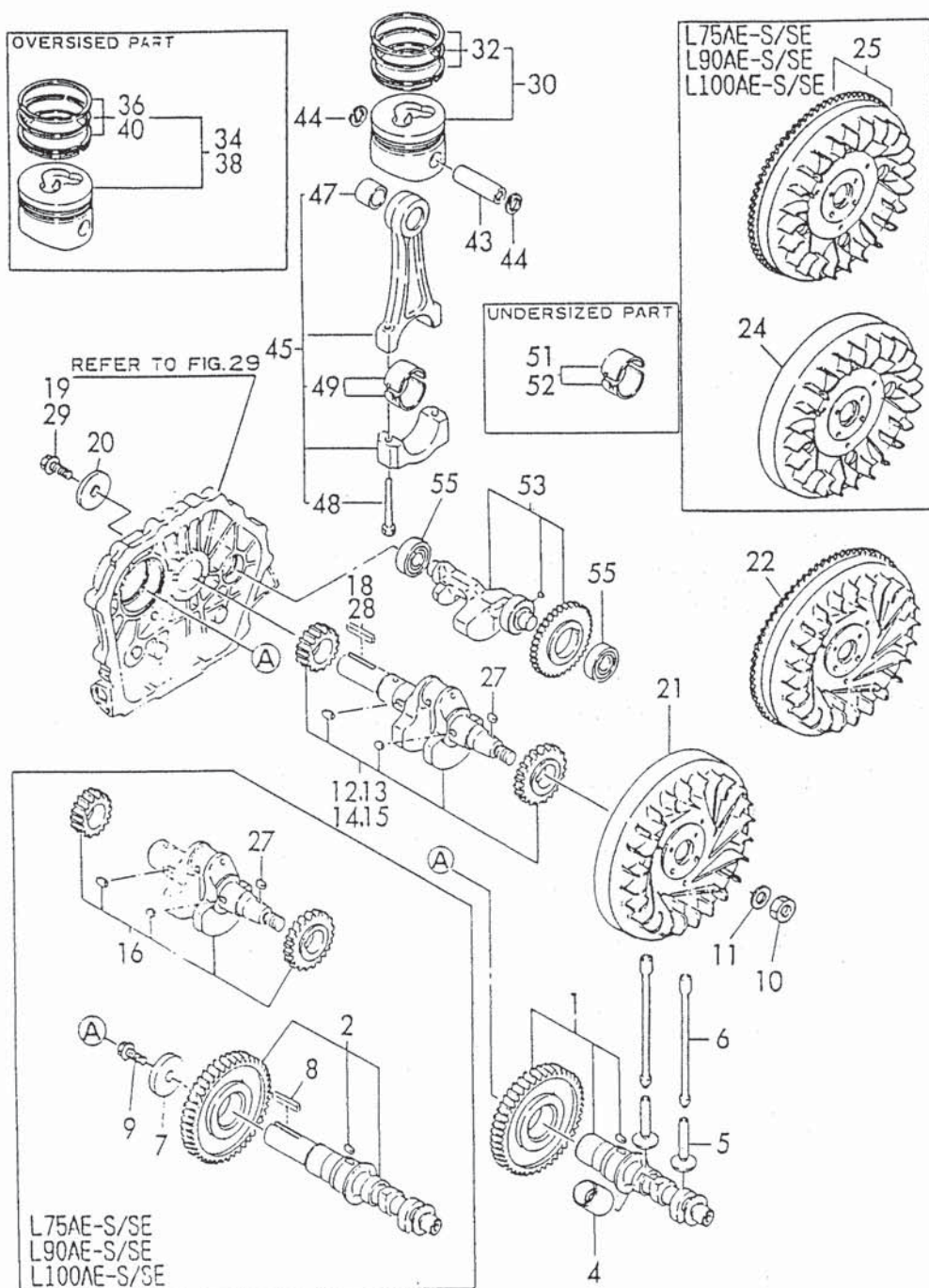
REF. NO.	LEV. 0	PART NO.	DESCRIPTION	-----Q'TY-----						I	P/U	A	R
				(A)	(B)	(C)	(D)	(E)	(F)				
1	.	714689-14580	CAMSHAFT(D) ASSY.	1	1	1							
2	.	714679-14580	CAMSHAFT(S) ASSY.				1	1	1				
4	.	114650-14200	TAPPET, SUC./EXH.	2	2	2	2	2	2				
5	.	114250-14260	TAPPET, FUEL	1	1	1	1	1	1				
6	.	114650-14401	ROD, PUSH	2	2	2	2	2	2				
7	.	145610-83880	RETAINER				1	1	1				
8	.	22512-070360	KEY 7X 36				1	1	1				
9	.	26106-100252	BOLT M10X 25 PLATED				1	1	1				
10	.	122710-01220	NUT (M18)	1	1	1	1	1	1				
11	.	114650-21551	WASHER, FLYWHEEL	1	1	1	1	1	1				
12	.	714689-21700	CRANKSHAFT ASSY(D/DE	1	1	1						(T)	
13	.	714689-21720	CRANKSHAFT ASY(EDPAC			1						(H)	
14	.	714689-21730	CRANKSHAFT ASY (DGMO	1	1							(Y)	
15	.	714689-21760	CRANKSHAFT ASSY. (DP	1	1	1						(#)	
16	.	714679-21710	CRANKSHAFT ASSY(S/SE				1	1	1				
18	.	160842-21150	KEY 6.3X50	1	1	1							
19	.	160842-21250	BOLT 7/16-20UNF	1	1	1							
20	.	160842-21260	WASHER	1	1	1							
21	.	114660-21401	FLYWHEEL (D)	1	1	1							
22	.	114662-21592	FLYWHEEL(DE) W/GEAR	1	1	1							
24	.	114650-21401	FLYWHEEL (S)				1	1	1				
25	.	114651-21592	FLYWHEEL(SE), W/GEAR				1	1	1				
27	.	22512-050140	KEY 5X 14	1	1	1	1	1	1				
28	.	22512-070140	KEY 7X 14		1	1						(H)	
29	.	26106-080202	BOLT M 8X 20 PLATED		1	1						(H)	
30A	.	714560-22723	PISTON W/RINGS	1									
30B	.	714660-22723	PISTON W/RINGS		1								
30C	.	714980-22720	PISTON W/RINGS			1							
30D	.	714550-22723	PISTON W/RINGS				1						
30E	.	714650-22723	PISTON W/RINGS					1					
30F	.	714970-22720	PISTON W/RING						1				
32A	..	714550-22502	RING SET, PISTON	1			1				1		
32B	..	714650-22502	RING SET, PISTON		1				1				
32C	..	714970-22500	RING SET, PISTON			1					1		
34A	.	714560-22624	PISTON W/RING(OSO.25	1								(%)	
34B	.	714660-22624	PISTON W/RING(OS=.25		1							(%)	
34C	.	714980-22620	PISTON W/RING(OSO.25			1						(%)	
34D	.	714550-22624	PISTON W/RING(OSO.25				1					(%)	
34E	.	714650-22624	PISTON W/RING(OSO.25					1				(%)	
34F	.	714970-22620	PISTON W/RING(OSO.25						1			(%)	
36A	..	714550-22542	RING SET O.S=0.25	1			1				1	(%)	
36B	..	714650-22542	RING SET O.S=0.25		1				1			(%)	
36C	..	714970-22540	RING SET (O.S 0.25)			1				1		(%)	
38A	.	714560-22580	PISTON W/RING(OSO.50	1								(%)	
38B	.	714660-22580	PISTON W/RING(OS=0.5		1							(%)	
38C	.	714980-22580	PISTON W/RINGS .500S			1						(%)	
38D	.	714550-22580	PISTON W/RINGS .500S				1					(%)	
38E	.	714650-22580	PISTON W/RING(OSO.50					1				(%)	
38F	.	714970-22580	PISTON W/RINGS .500S						1			(%)	
40A	..	714550-22550	RING SET O.S=0.50	1			1				1	(%)	
40B	..	714650-22550	RING SET O.S=0.50		1				1			(%)	
40C	..	714970-22550	RING SET O.S=0.5			1				1		(%)	
43	.	114650-22300	PIN, PISTON	1	1	1	1	1	1			(%)	
44	.	129792-22400	CIRCLIP 23	2	2	2	2	2	2				

** CONTINUE **

Y050537

SPEC. CODED14971-21100D14689-21700
 D14970-14100D14970-21500D14550-22100
 D14980-14100D14971-21500D14560-22100
 D14586-21100D14980-21500D14650-22100
 D14688-21100D14981-21500D14660-22100
 D14688-21110D14388-21700D14650-23100
 D14689-21100D14680-21700D14970-28100
 D14980-22100D14970-22100

Fig. 32 CRANKSHAFT, PISTON & CAMSHAFT



L75AE-D/L90AE-D/L100AE-D
 CRANK SHAFT

Ref. No.	MAGNIFIED AXIAL END	SCREW SIZE	KEY SIZE	Ref. No.	MAGNIFIED AXIAL END	SCREW SIZE
12		5/16-24UNF	6.3x50	14		5/16-24UNF
13		M8x1.25	7x14	15		1"-14UNF

+-----+
 I 1F07 I
 I(1F02)I
 +-----+
 Y00R3981

91.07.02

(32) CAM/CRANK SHAFT & PISTON/ROD

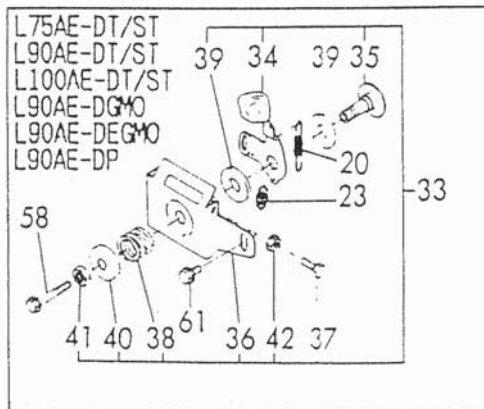
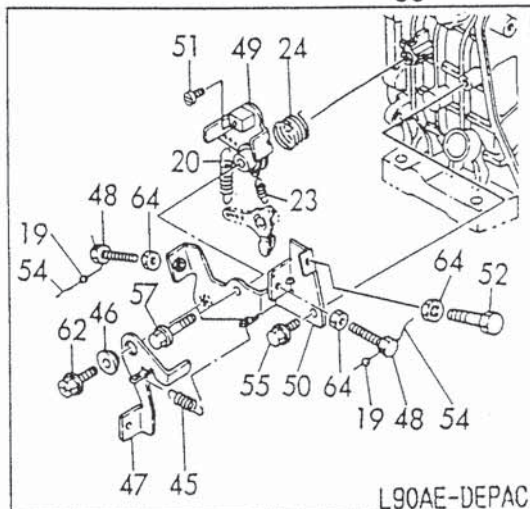
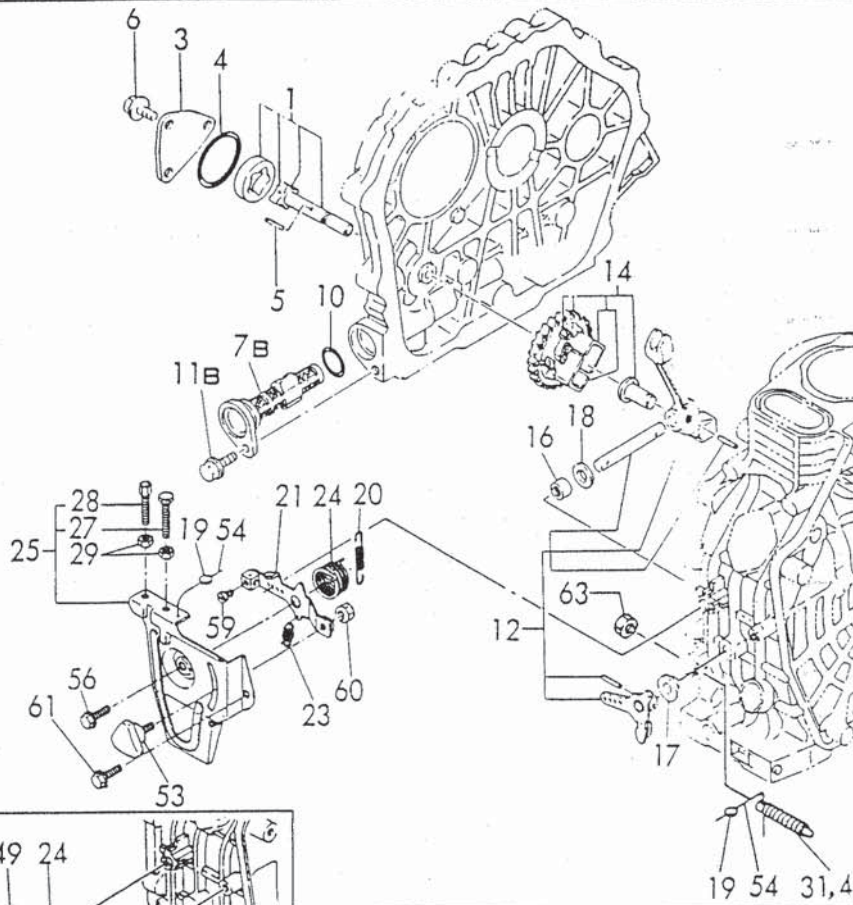
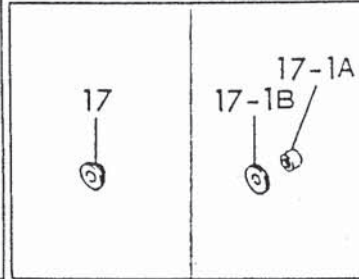
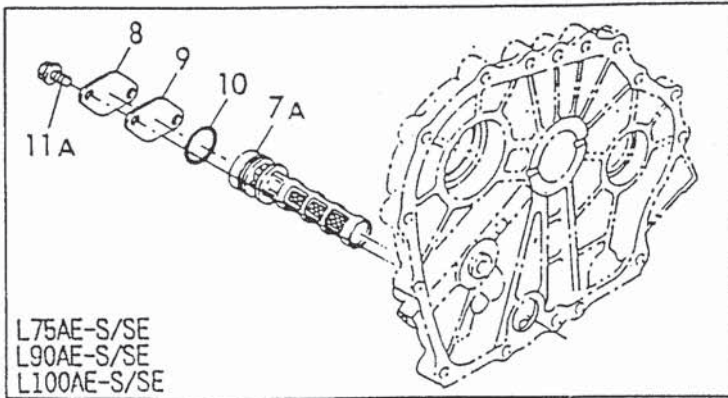
(A)=L75AE-D/DE (D)=L75AE-S/SE
 (B)=L90AE-D/DE (E)=L90AE-S/SE
 (C)=L100AE-D/DE (F)=L100AE-S/SE

REF. NO.	LEV. 0	PART NO.	DESCRIPTION	-----Q'TY-----						I P/U A R
				(A)	(B)	(C)	(D)	(E)	(F)	
45	.	714650-23700	ROD ASSY, CONNECTING	1	1	1	1	1	1	
47	..	124060-23100	BUSH, PISTON PIN	1	1	1	1	1	1	
48	..	104200-23201	BOLT, ROD	2	2	2	2	2	2	
49	..	714650-23600	BEARING, CRANKPIN	1	1	1	1	1	1	
51	.	714650-23610	BEARING,PIN(U.S=0.25	1	1	1	1	1	1	(X)
52	.	714650-23620	BEARING,PIN(U.S=0.50	1	1	1	1	1	1	(X)
53	.	714689-28510	SHAFT ASSY, BALANCER	1	1	1	1	1	1	
55	.	24101-062034	BALL BEARING	2	2	2	2	2	2	

----- REMARKS -----
 I(X) OVERSIZED & UNDERSIZED PARTS
 I(Y) FOR L75AE/90AE-D(E)GMO
 I(H) FOR L90AE-DEPAC
 I(#) FOR L75AE/90AE/100AE-D(E)P
 I(T) FOR L75AE/90AE/100AE-D/DE
 I L75AE/90AE/100AE-D(E)TM,

Fig. **33** LUB. OIL PUMP & GOVERNOR

SPEC. CODE
 D14970-32100
 D14250-35100
 D14250-35110
 D14970-61100
 D14389-66100
 D14770-66110
 D14770-66120
 D14670-66500
 D14685-66500
 D14270-66800



+-----+
 I 1F08 I
 I (1F02) I
 +-----+
 YOOR3981

(33) L.O. DEVICE & GOVERNOR CONTROL

91.07.02

(A)=L75AE-D/DE (D)=L75AE-S/SE
 (B)=L90AE-D/DE (E)=L90AE-S/SE
 (C)=L100AE-D/DE (F)=L100AE-S/SE

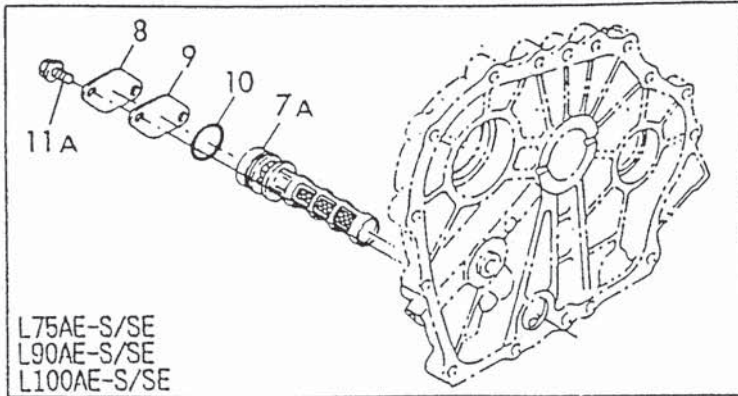
REF. NO.	LEV. 0	PART NO.	DESCRIPTION	-----Q'TY-----						I	P	U	A	R
				(A)	(B)	(C)	(D)	(E)	(F)					
1	.	114650-32010	PUMP ASSY, LUB.OIL	1	1	1	1	1	1					
3	.	114250-32070	COVER, LUB. OIL PUMP	1	1	1	1	1	1					
4	.	103338-32570	O-RING	1	1	1	1	1	1					
5	.	22312-030160	PARALLEL PIN 3X16	1	1	1	1	1	1					
6	.	26476-060142	BOLT M 6X 14,TAPPING	3	3	3	3	3	3					
7A	.	114250-35060	STRAINER, LUB. OIL				1	1	1					
7B	.	114250-35070	STRAINER, LUB. OIL	1	1	1								
8	.	114250-35250	COVER				1	1	1					
9	.	114250-35270	GASKET, L.O.STRAINER				1	1	1					
10	.	24341-000224	O-RING 1A S-22.4	1	1	1	1	1	1					
11A	.	26106-060122	BOLT M 6X 12 PLATED				2	2	2					
11B	.	26106-060162	BOLT M 6X 16 PLATED	1	1	1								
12	.	714650-61500	LEVER ASSY, GOVERNOR	1	1	1	1	1	1					
14	.	714970-61700	GOVERNOR ASSY	1	1	1	1	1	1					
16	.	121450-61520	NEEDLE BEARING FJ810	2	2	2	2	2	2					
17	.	114250-61900	BUSH, THRUST	1	1	1	1	1	1					
17-1A	.	114770-61600	SEAL, OIL	1	1	1	1	1	1				F	
	(A=X)												
17-1B	.	114770-61610	WASHER	1	1	1	1	1	1				F	
	(A=X)												
18	.	22137-080000	WASHER 8, POLISHED	1	1	1	1	1	1					
19	.	135210-61090	LEAD	2	2	2	2	2	2					
20	.	114970-66010	SPRING, REGULATOR	1	1	1	1	1	1					
21	.	114250-66050	HANDLE, REGULATOR	1	1	1	1	1	1					
23	.	114250-66200	SPRING, RETURN	1	1	1	1	1	1					
24	.	114252-66252	SPRING, RETURN	1	1	1	1	1	1					
25	.	714268-66500	BRACKET ASSY,REGULAT	1	1	1	1	1	1					
27	...	114250-66440	BOLT, ADJUSTING	1	1	1	1	1	1					
28	...	102100-67080	BOLT, ADJUSTING	1	1	1	1	1	1					
29	..	26757-060002	LOCK NUT M 6 PLATED	2	2	2	2	2	2					
31	.	114650-66500	TORQUE SPRING ASSY	1	1	1	1	1	1					
33	.	183250-66500	BRACKET ASSY,REGULAT	1	1	1								(Y)
34	..	183250-66050	HANDLE, REGULATOR	1	1	1								(Y)
35	..	183250-66070	SHAFT, HANDLE	1	1	1								(Y)
36	..	183250-66100	BRACKET, REGULATOR	1	1	1								(Y)
37	..	114250-66440	BOLT, ADJUSTING	1	1	1								(Y)
38	..	104200-66820	SPRING	1	1	1								(Y)
39	..	104200-66830	PLATE, FRICTION	2	2	2								(Y)
40	..	104200-66850	WASHER (B)	1	1	1								(Y)
41	..	26696-100002	NUT M10	1	1	1								(Y)
42	..	26757-060002	LOCK NUT M 6 PLATED	1	1	1								(Y)
43	.	114650-66600	TORQUE SPRING ASSY	1	1	1								(#)
45	.	114268-66200	SPRING, RETURN				1							(H)
46	.	114654-66140	PIECE				1							(H)
47	.	114650-66150	LEVER, STOP				1							(H)
48	.	114250-66440	BOLT, ADJUSTING				2							(H)
49	.	114652-66871	LEVER, REGULATOR				1							(H)
50	.	114652-66881	BLACKET,LEVER				1							(H)
51	.	105225-66990	SCREW				1							(H)
52	.	102100-67080	BOLT, ADJUSTING				1							(H)
53	.	160725-78350	KNOB (W/M6X15)	1	1	1	1	1	1					
54	.	22451-060000	WIRE 0.6	2	2	2	2	2	2					
55	.	26106-060122	BOLT M 6X 12 PLATED				1							(H)
56	.	26106-060202	BOLT M 6X 20 PLATED	1	1	1	1	1	1					

** CONTINUE **

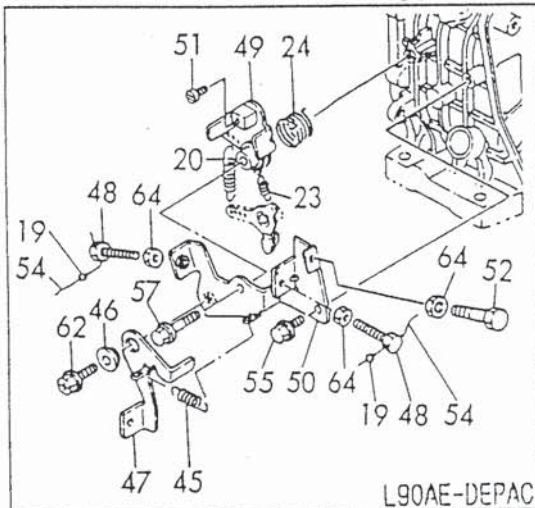
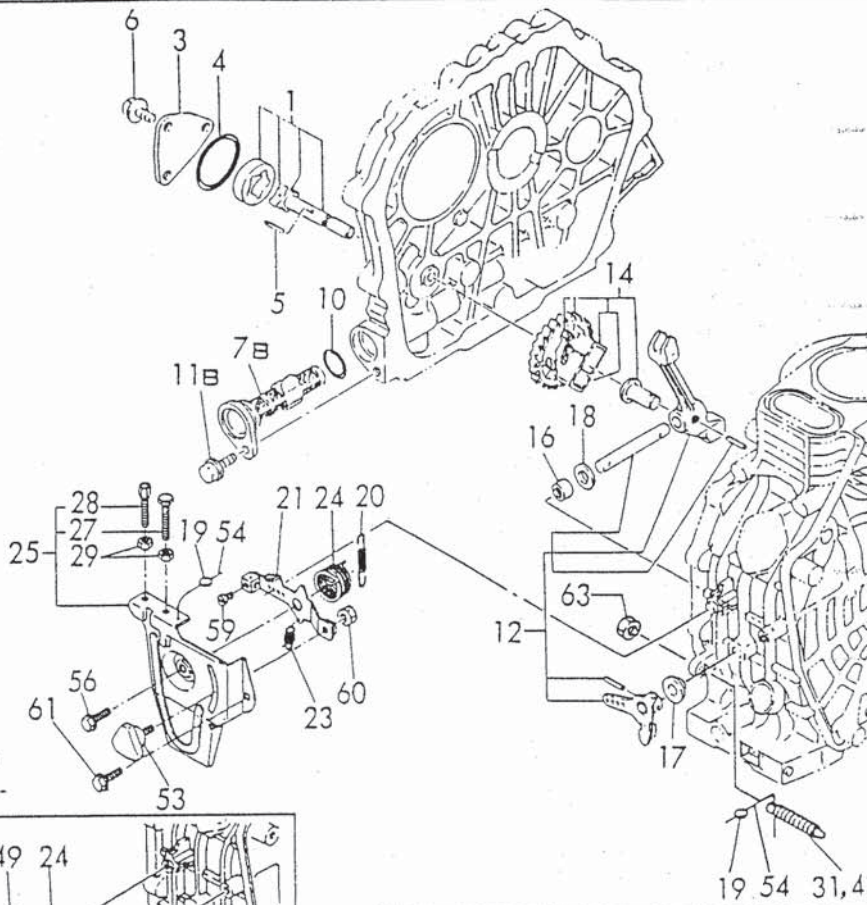
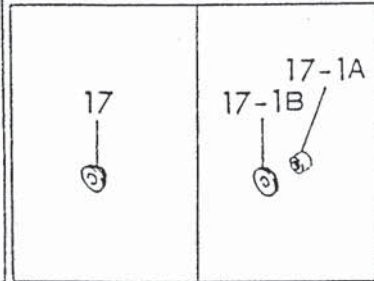
17-1RQ

Fig. 33 LUB. OIL PUMP & GOVERNOR

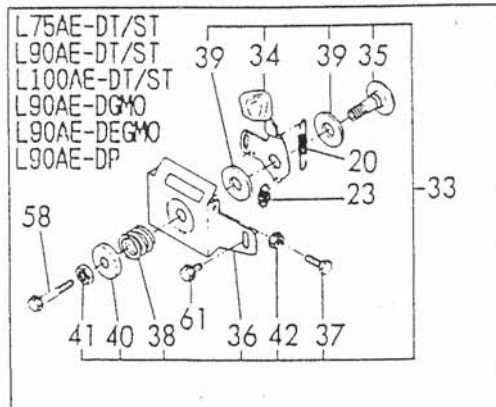
SPEC. CODE
 D14970-32100
 D14250-35100
 D14250-35110
 D14970-61100
 D14389-66100
 D14770-66110
 D14770-66120
 D14670-66500
 D14685-66500
 D14270-66800



L75AE-S/SE
 L90AE-S/SE
 L100AE-S/SE



L90AE-DEPAC



+-----+
 I 1F09 I
 I (1F02) I
 +-----+
 Y00R3981

(33) L.O. DEVICE & GOVERNOR CONTROL

91.07.02

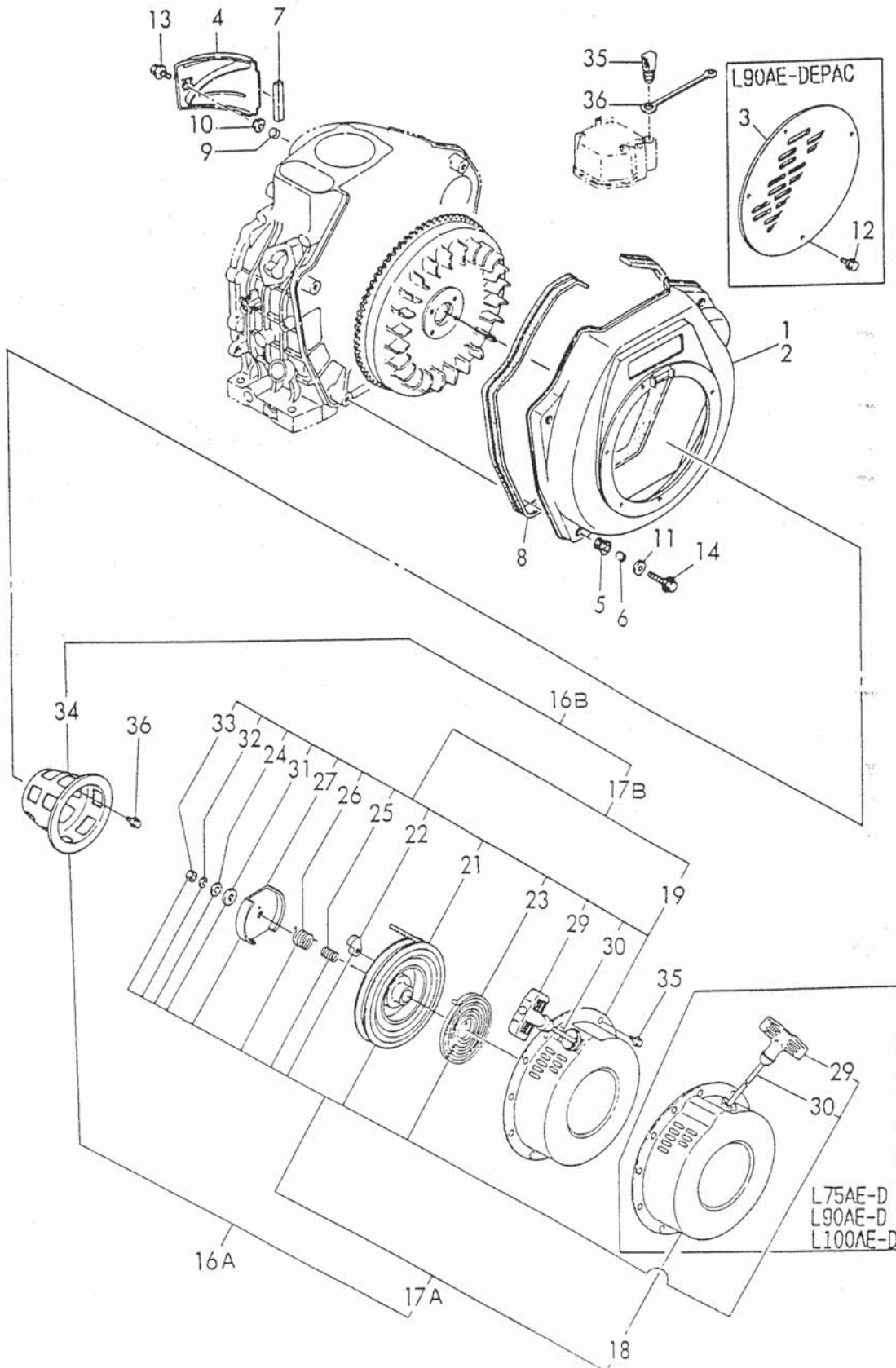
(A)=L75AE-D/DE (D)=L75AE-S/SE
 (B)=L90AE-D/DE (E)=L90AE-S/SE
 (C)=L100AE-D/DE (F)=L100AE-S/SE

REF. NO.	LEV. 0	PART NO.	DESCRIPTION	-----Q'ITY-----						I P/U A R
				(A)	(B)	(C)	(D)	(E)	(F)	
57	.	26106-060302	BOLT M 6X 30 PLATED		1					(H)
58	.	26106-060452	BOLT M 6X 45 PLATED	1	1	1				(Y)
59	.	26116-040088	BOLT M 4X 8 PLATED	1	1	1	1	1	1	
60	.	26346-060002	U-NUT M 6 PLATED	1	1	1	1	1	1	
61	.	26476-060142	BOLT M 6X 14,TAPPING	1	1	1	1	1	1	
62	.	26476-060202	BOLT M 6X 20,TAPPING		1	1				
63	.	26696-100002	NUT M10	1	1	1	1	1	1	
64	.	26757-060002	LOCK NUT M 6 PLATED	2	3	3	2	2	2	

----- REMARKS -----
 I (Y) FOR L75AE/90AE-D(E)GMO &
 I L75AE/90AE/100AE-D(E)P
 I (#) FOR L75AE/90AE-D(E)GMO
 I (H) FOR L90AE-DEPAC

Fig. **34** COOLING & STARTING DEVICE

SPEC. CODE
 D14654-45110
 D14658-45101
 D14668-45101
 D83677-45101
 D14650-76110
 D14654-76120
 D14660-76110



+-----+
 I 1F10 I
 I(1F02)I
 +-----+
 YOOR3981

(34) COOLING & RECOIL STARTER

91.07.02

(A)=L75AE-D/DE (D)=L75AE-S/SE
 (B)=L90AE-D/DE (E)=L90AE-S/SE
 (C)=L100AE-D/DE (F)=L100AE-S/SE

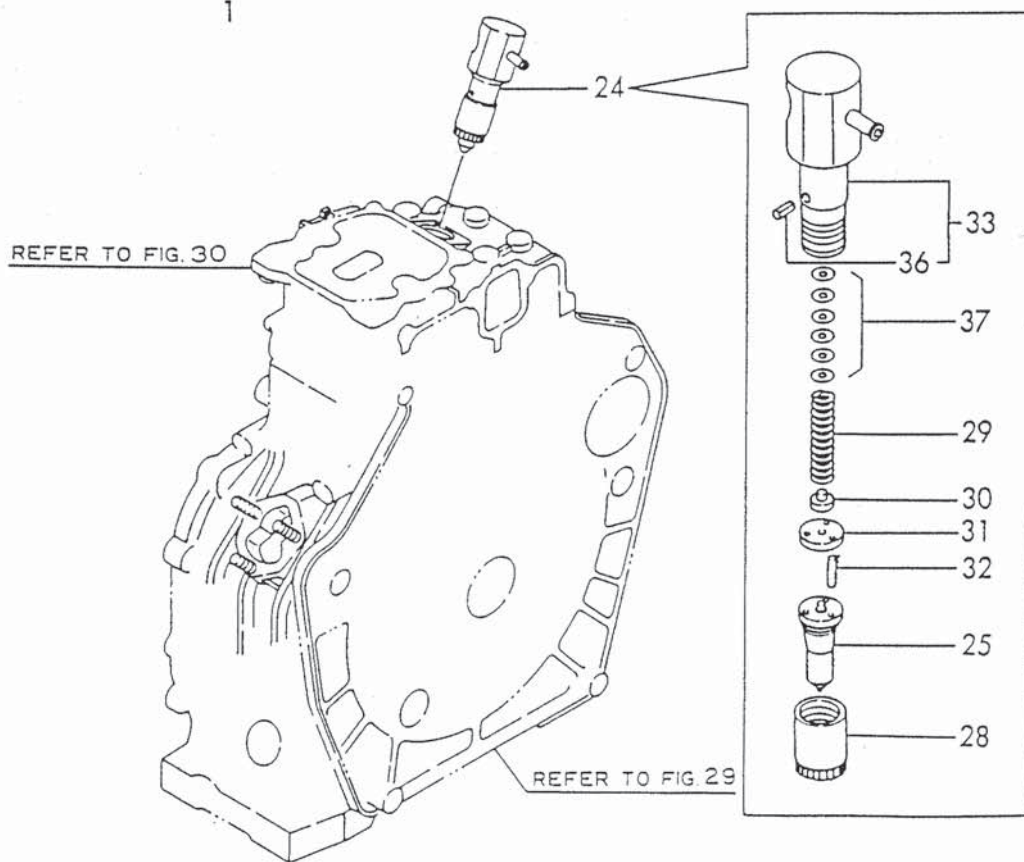
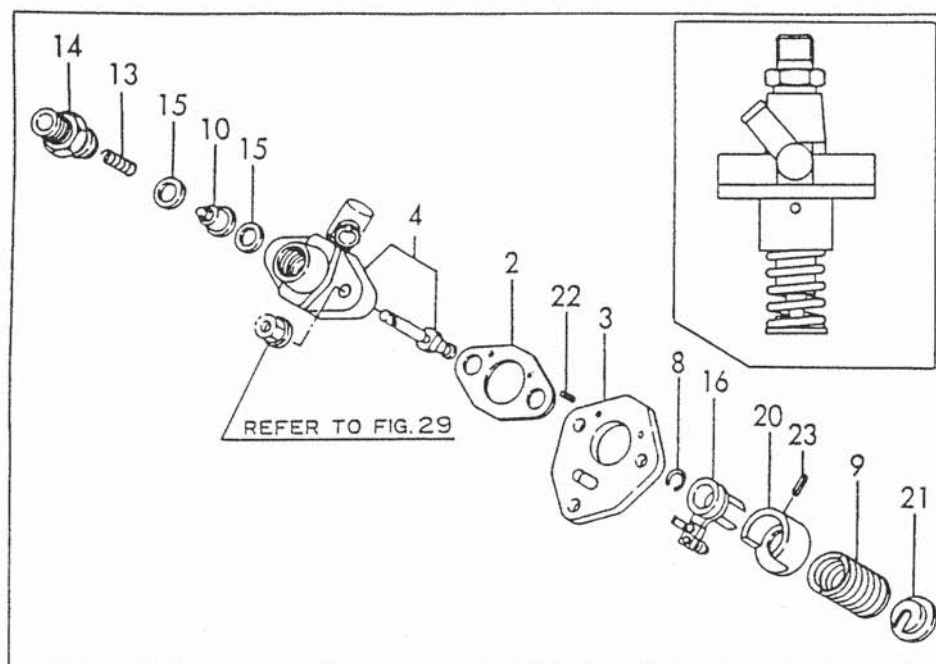
REF. NO.	LEV. 0	PART NO.	DESCRIPTION	-----Q'ITY-----						I	P	U	A	R
				(A)	(B)	(C)	(D)	(E)	(F)					
1	.	114668-45102	CASE(D), COOLING FAN	1	1	1								
2	.	114658-45102	CASE(S), COOLING FAN				1	1	1					
3	.	114654-45180	COVER, DUST		1									(Y)
4	.	114650-45200	COVER, CYLINDER	1	1	1	1	1	1					
5	.	114250-45300	RUBBER, CUSHION	4	4	4	4	4	4					
6	.	114250-45310	COLLAR	4	4	4	4	4	4					
7	.	114350-45320	RUBBER, SEAL	1	1	1	1	1	1					
8	.	114650-45330	SEAL, FAN CASE	1	1	1	1	1	1					
9	.	114350-45340	COLLAR	1	1	1	1	1	1					
10	.	183720-55210	GROMMET	1	1	1	1	1	1					
11	.	160120-76940	WASHER	4	4	4	4	4	4					
12	.	26106-060082	BOLT M 6X 8 PLATED		4									(Y)
13	.	26476-060202	BOLT M 6X 20, TAPPING	1	1	1	1	1	1					
14	.	26476-060252	BOLT M 6X 25, TAPPING	4	4	4	4	4	4					
16A	.	114660-76050	RECOIL STARTER(D)ASY	1	1									
16B	.	114650-76050	RECOIL STARTER(S)ASY				1	1						
17A	..	114660-76250	RECOIL STARTER(D)ASY	1	1									
17A-1	..	714660-76821	RECOIL STARTER(D)ASY	1	1	1							N	
(A=X)														
17B	..	114650-76250	RECOIL STARTER(S)ASY				1	1						
17B-1	..	714650-76821	RECOIL STARRER(S)ASY				1	1	1	N				
(D=X)														
18	...	714660-76831	CASE (D) W/LABEL	1	1	1								
19	...	714650-76831	CASE (S) W/LABEL				1	1	1					
20C	114250-07350	LABEL, YANMAR DIESEL	1	1	1	1	1	1					
21	...	114650-76520	REEL, RECOIL	1	1	1	1	1	1					
22	...	160910-76530	RATCHET	1	1	1	1	1	1					
23	...	114650-76540	SPRING, SPIRAL	1	1	1	1	1	1					
24	...	160910-76550	WASHER, THRUST	1	1	1	1	1	1					
25	...	160910-76560	SPRING, FRICTION	1	1	1	1	1	1					
26	...	160910-76570	SPRING, RETURN	1	1	1	1	1	1					
27	...	160910-76580	PLATE, FRICTION	1	1	1	1	1	1					
29	...	160910-76620	KONB, STARTER	1	1	1	1	1	1					
30	...	114650-76630	ROPE, RECOIL STARTER	1	1	1	1	1	1					
31	...	160910-76650	WASHER (B)	1	1	1	1	1	1					
32	...	22217-060000	SPRING WASHER 6	1	1	1	1	1	1					
33	...	26717-060002	NUT M 6	1	1	1	1	1	1					
34	..	114660-76590	PULLEY, STARTER	1	1	1	1	1	1					
35	.	114250-76600	PLUNGER	1	1	1	1	1	1					
36	.	114250-76610	HOLDER, PLUNGER	1	1	1	1	1	1					
37	.	26106-060082	BOLT M 6X 8 PLATED	4	4	4	4	4	4					
38	.	26106-060122	BOLT M 6X 12 PLATED	3	3	3	3	3	3					
39	.	160710-78710	CLAMP, CORD	1	1	1								

----- REMARKS -----

I(Y) FOR L90AE-DEPAC
 I(H) FOR L75AE/90AE/100AE-D(E)P

Fig. **35** FUEL INJECTION PUMP & VALVE

SPEC. CODE
 D14550-51100 D14650-53100
 D14650-51100



+-----+
 I 1F11 I
 I(1F02)I
 +-----+
 YOOR3981

(35) FUEL INJECTION PUMP & VALVE

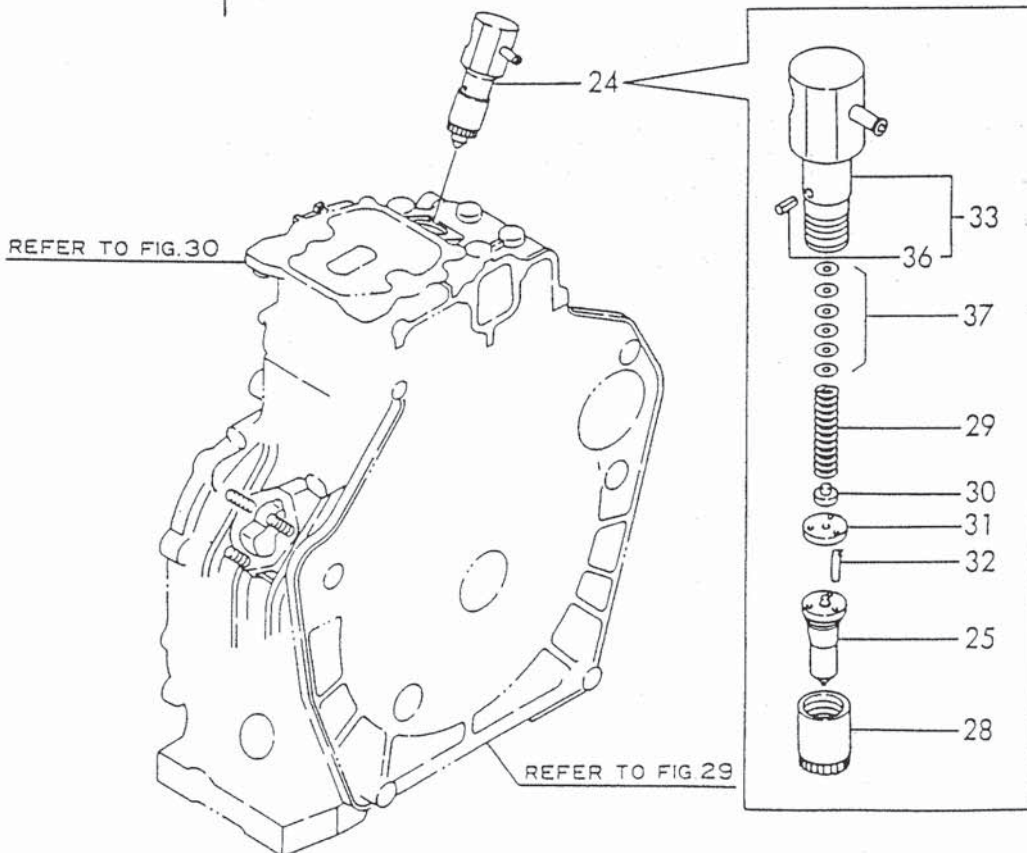
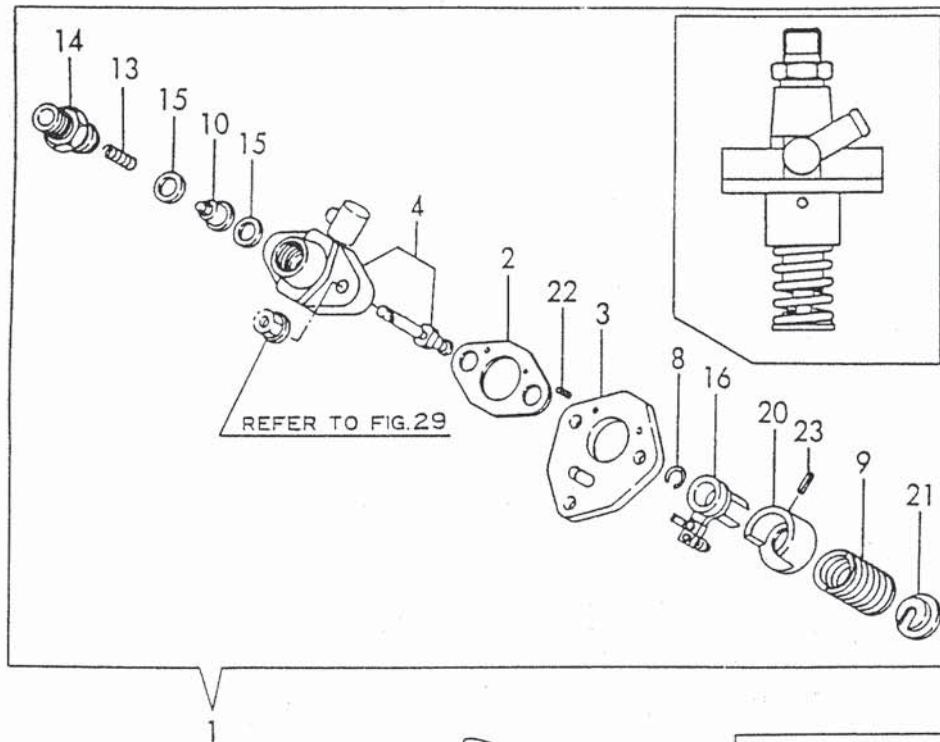
91.07.02

(A)=L75AE-D/DE (D)=L75AE-S/SE
 (B)=L90AE-D/DE (E)=L90AE-S/SE
 (C)=L100AE-D/DE (F)=L100AE-S/SE

REF. NO.	LEV. 0	PART NO.	DESCRIPTION	-----+Q'TY-----						I	P/U	A	R
				(A)	(B)	(C)	(D)	(E)	(F)				
1A	.	714550-51700	FUEL ASSY, F.INJECT.	1			1						
1B	.	714650-51700	PUMP ASSY, F.INJECT.		1			1					
1C	.	714970-51700	PUMP ASSY, F.INJECT.			1					1		
2	..	105546-51020	GASKET	1	1	1	1	1	1				
3	..	114250-51080	PLATE	1	1	1	1	1	1				
4A	..	114650-51100	BODY, F.I. PUMP	1	1		1	1					
4B	..	114970-51100	BODY, F. I. PUMP				1				1		
8	..	114250-51150	SNAP RING	1	1	1	1	1	1				
9	..	114250-51160	SPRING	1	1	1	1	1	1				
10	..	114650-51300	VALVE ASSY, DELIVERY	1	1	1	1	1	1				
13	..	105546-51330	SPRING, DELIV. VALVE	1	1	1	1	1	1				
14	..	114250-51340	HOLDER, F.I.P.DELIVE	1	1	1	1	1	1				
15	..	124550-51350	GASKET, DELIVERY	2	2	2	2	2	2				
16	..	114250-51600	LEVER ASSY, CONTROL	1	1	1	1	1	1				
20	..	114250-51640	SEAT (A), SPRING	1	1	1	1	1	1				
21	..	114250-51650	SEAT (B), SPRING	1	1	1	1	1	1				
22	..	22351-020006	SPRING PIN 2X 6	2	2	2	2	2	2				
23	..	22351-030008	SPRING PIN 3X 8	1	1	1	1	1	1				
24	.	714650-53100	VALVE ASSY, F.INJECT	1	1	1	1	1	1				
25	..	114650-53000	NOZZLE ASSY,F.INJECT	1	1	1	1	1	1				
28	..	114250-53080	NUT, NOZZLE CASE	1	1	1	1	1	1				
29	..	114250-53120	SPRING, NOZZLE	1	1	1	1	1	1				
30	..	114250-53130	SEAT, NOZZLE SPRING	1	1	1	1	1	1				
31	..	114250-53140	PLATE, STOP	1	1	1	1	1	1				
32	..	114250-53210	PIN	2	2	2	2	2	2				
33	..	114650-53300	HOLDER ASSY, NOZZLE	1	1	1	1	1	1				
36	...	114250-53331	PIN, SPRING	1	1	1	1	1	1				
37	..	114250-53400	SHIM PACK	1	1	1	1	1	1				

SPEC. CODE
D83550-51400
D83650-51400
D14650-53100

Fig. **36** FUEL INJECTION PUMP & VALVE



+-----+
 I 1F12 I
 I(1F02)I
 +-----+
 Y00R3981

(36) FUEL INJECTION PUMP & VALVE

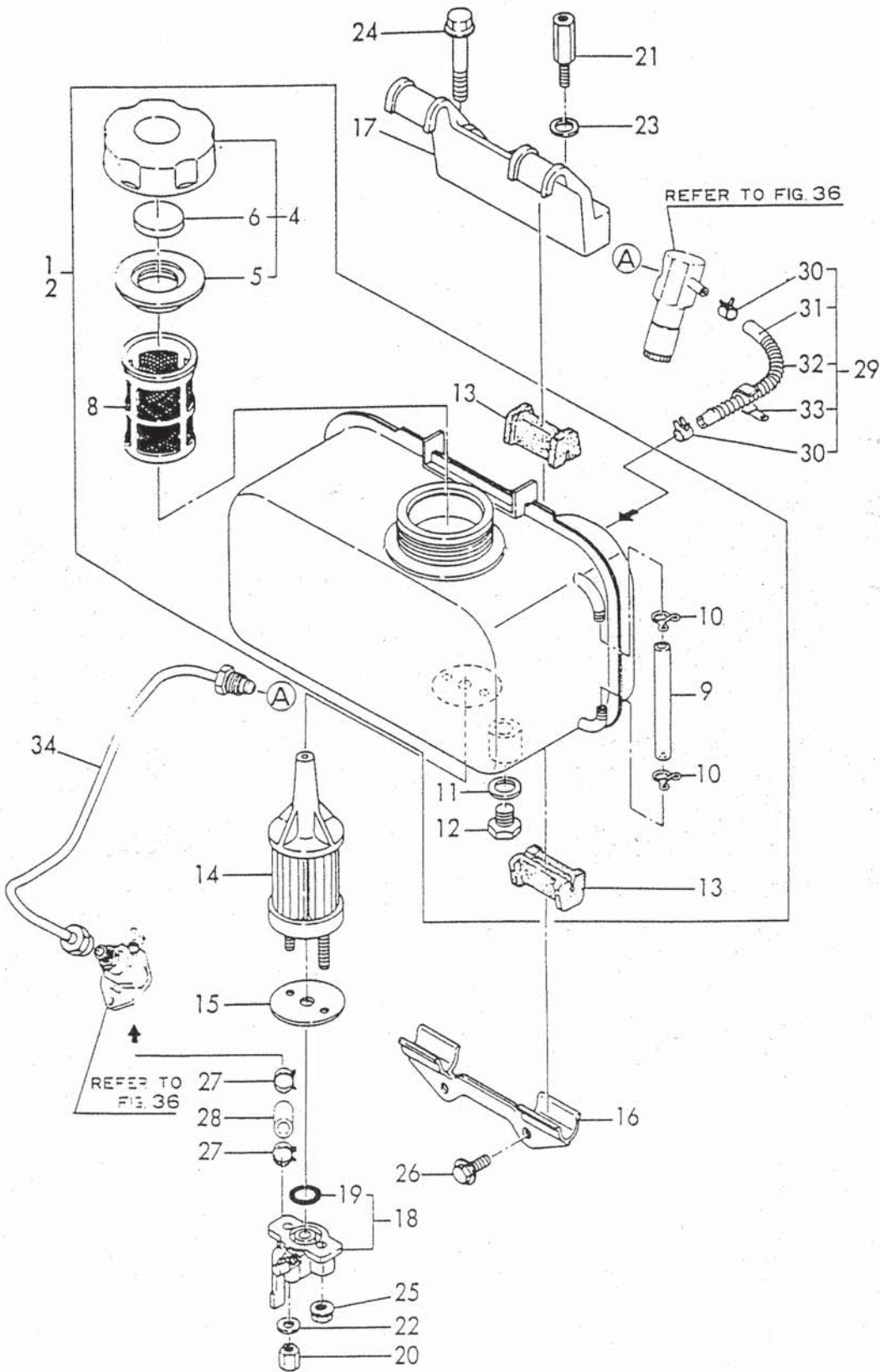
91.07.02

(A)=L75AE-D(E)TM(D)=L75AE-S(E)TM
 (B)=L90AE-D(E)TM(E)=L90AE-S(E)TM
 (C)=L100AE-DETM (F)=L100AE-SETM

REF. NO.	LEV. 0	PART NO.	DESCRIPTION	-----Q'TY-----						I	P/U	A	R
				(A)	(B)	(C)	(D)	(E)	(F)				
1A	.	783550-51740	PUMP ASSY. F.INJECT.	1			1						
1B	.	783650-51740	PUMP ASSY. F.INJECT.		1			1					
1C	.	783986-51740	PUMP ASSY. F.INJECT.			1					1		
2	..	105546-51020	GASKET	1	1	1	1	1	1	1			
3	..	114250-51080	PLATE	1	1	1	1	1	1	1			
4A	..	183650-51400	BODY, F. I. PUMP	1	1		1	1					
4B	..	183986-51400	BODY, F. I. PUMP			1						1	
8	..	114250-51150	SNAP RING	1	1	1	1	1	1	1			
9	..	114250-51160	SPRING	1	1	1	1	1	1	1			
10	..	114650-51300	VALVE ASSY, DELIVERY	1	1	1	1	1	1	1			
13	..	105546-51330	SPRING, DELIV. VALVE	1	1	1	1	1	1	1			
14	..	114250-51340	HOLDER, F.I.P.DELIVE	1	1	1	1	1	1	1			
15	..	124550-51350	GASKET, DELIVERY	2	2	2	2	2	2	2			
16	..	114250-51600	LEVER ASSY, CONTROL	1	1	1	1	1	1	1			
20	..	114250-51640	SEAT (A), SPRING	1	1	1	1	1	1	1			
21	..	114250-51650	SEAT (B), SPRING	1	1	1	1	1	1	1			
22	..	22351-020006	SPRING PIN 2X 6	2	2	2	2	2	2	2			
23	..	22351-030008	SPRING PIN 3X 8	1	1	1	1	1	1	1			
24	.	714650-53100	VALVE ASSY, F.INJECT	1	1	1	1	1	1	1			
25	..	114650-53000	NOZZLE ASSY, F.INJECT	1	1	1	1	1	1	1			
28	..	114250-53080	NUT, NOZZLE CASE	1	1	1	1	1	1	1			
29	..	114250-53120	SPRING, NOZZLE	1	1	1	1	1	1	1			
30	..	114250-53130	SEAT, NOZZLE SPRING	1	1	1	1	1	1	1			
31	..	114250-53140	PLATE, STOP	1	1	1	1	1	1	1			
32	..	114250-53210	PIN	2	2	2	2	2	2	2			
33	..	114650-53300	HOLDER ASSY, NOZZLE	1	1	1	1	1	1	1			
36	...	114250-53331	PIN, SPRING	1	1	1	1	1	1	1			
37	..	114250-53400	SHIM PACK	1	1	1	1	1	1	1			

Fig. **37** FUEL TANK & FUEL LINE

SPEC. CODE
D14650-55100
D14650-59100



+-----+
 I 1F13 I
 I(1F02)I
 +-----+
 YOOR3981

(37) FUEL TANK & FUEL PIPE

91.07.02

(A)=L75AE-D/DE (D)=L75AE-S/SE
 (B)=L90AE-D/DE (E)=L90AE-S/SE
 (C)=L100AE-D/DE (F)=L100AE-S/SE

REF. NO.	LEV. 0	PART NO.	DESCRIPTION	-----Q'TY-----						I P/U A R
				(A)	(B)	(C)	(D)	(E)	(F)	
1	.	714569-55701	TANK ASSY, FUEL(D/S)	1	1	1	1	1	1	
2	.	714668-55721	TANK ASSY.FUEL(DGMO	1	1					(H)
4	..	114250-55041	CAP, TANK	1	1	1	1	1	1	
5	...	114250-55050	GASCET, TANK CAP	1	1	1	1	1	1	
6	...	114250-55060	SEAL	1	1	1	1	1	1	
8	..	114250-55100	FILTER, FUEL	1	1	1	1	1	1	
9	..	114650-55150	PIPE, GAUGE	1	1	1	1	1	1	
10	..	124722-59050	CLAMP 9	2	2	2	2	2	2	
11	..	23414-120000	GASKET 12, ROUND	1	1	1	1	1	1	
12	..	23887-120002	PLUG 12,HEX.	1	1	1	1	1	1	
13	..	114250-55201	DAMPER, FUEL TANK	4	4	4	4	4	4	
14	.	114650-55120	FILTER, FUEL OIL	1	1	1	1	1	1	
15	.	114250-55130	GASKET	1	1	1	1	1	1	
16	.	114250-55211	STAY (A)	1	1	1	1	1	1	
17	.	114650-55230	STAY (B)	1	1	1	1	1	1	
18	.	114250-55300	COCK ASSY, FUEL	1	1	1	1	1	1	
19	..	24341-000150	O-RING 1A S-15.0	1	1	1	1	1	1	
20	.	114252-55800	NUT	1	1	1	1	1	1	
21	.	114650-55810	BOLT, LIFTING	1	1	1	1	1	1	
22	.	22117-060000	WASHER 6	1	1	1	1	1	1	
23	.	22117-080000	WASHER 8	1	1	1	1	1	1	
24	.	26106-080452	BOLT M 8X 45 PLATED	1	1	1	1	1	1	
25	.	26366-060002	NUT M 6	1	1	1	1	1	1	
26	.	26476-060142	BOLT M 6X 14,TAPPING	2	2	2	2	2	2	
27	.	106990-44660	BAND, HOSE	2	2	2	2	2	2	
28	.	114250-59050	PIPE, FUEL OIL	1	1	1	1	1	1	
29	.	114652-59300	PIPE, FUEL RETURN	1	1	1	1	1	1	
30	..	124722-59050	CLAMP 9	2	2	2	2	2	2	
31	..	114250-59060	PIPE, FUEL RETURN	1	1	1	1	1	1	
32	..	114652-59310	TUBE, PROTECT	1	1	1	1	1	1	
33	..	121750-59890	RETAINER	1	1	1	1	1	1	
34	.	114650-59800	PIPE, FUEL INJECTION	1	1	1	1	1	1	

----- REMARKS -----+-----

I(H) FOR L75AE/90AE-D(E)GMO

Y053604

+-----+
 I 1F14 I
 I(1F02)I
 +-----+
 YOOR3981

(38) FUEL TANK & FUEL PIPE

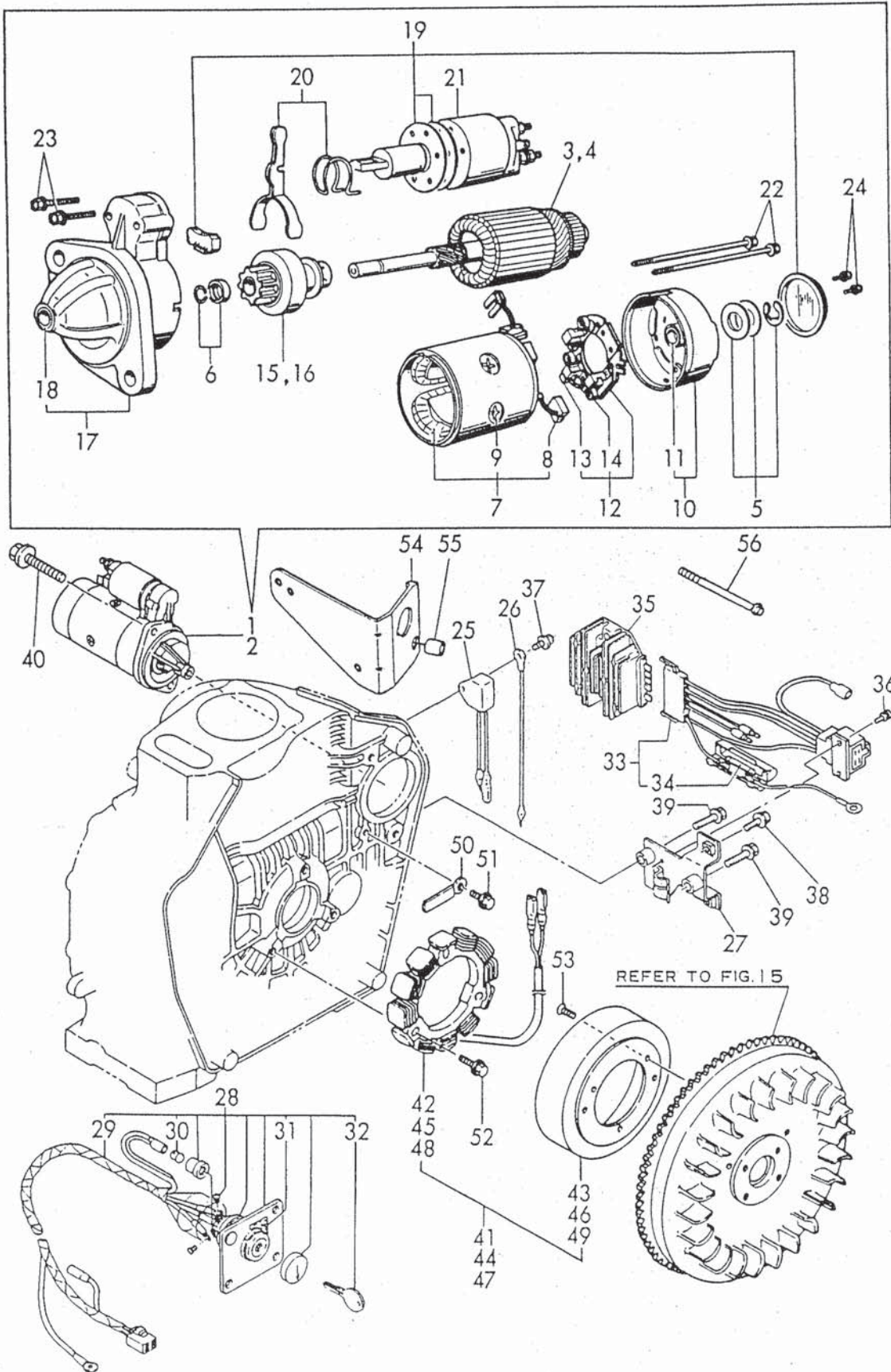
91.07.02

(A)=L75AE-D(E)TM(D)=L75AE-S(E)TM
 (B)=L90AE-D(E)TM(E)=L90AE-S(E)TM
 (C)=L100AE-DETM (F)=L100AE-SETM

REF. NO.	LEV. 0	PART NO.	DESCRIPTION	-----Q'TY-----						I P/U A R
				(A)	(B)	(C)	(D)	(E)	(F)	
1	.	714668-55700	TANK ASSY.(DTM/STM)	1	1	1	1	1	1	
3	..	114250-55041	CAP, TANK	1	1	1	1	1	1	
4	...	114250-55050	GASCET, TANK CAP	1	1	1	1	1	1	
5	...	114250-55060	SEAL	1	1	1	1	1	1	
7	..	114250-55100	FILTER, FUEL	1	1	1	1	1	1	
8	..	114650-55150	PIPE, GAUGE	1	1	1	1	1	1	
9	..	124722-59050	CLAMP 9	2	2	2	2	2	2	
10	..	23414-120000	GASKET 12, ROUND	1	1	1	1	1	1	
11	..	23887-120002	PLUG 12,HEX.	1	1	1	1	1	1	
12	..	114250-55201	DAMPER, FUEL TANK	4	4	4	4	4	4	
13	.	114650-55120	FILTER, FUEL OIL	1	1	1	1	1	1	
14	.	114250-55130	GASKET	1	1	1	1	1	1	
15	.	114250-55211	STAY (A)	1	1	1	1	1	1	
16	.	114650-55230	STAY (B)	1	1	1	1	1	1	
17	.	114250-55300	COCK ASSY, FUEL	1	1	1	1	1	1	
18	..	24341-000150	O-RING 1A S-15.0	1	1	1	1	1	1	
19	.	114252-55800	NUT	1	1	1	1	1	1	
20	.	114650-55810	BOLT, LIFTING	1	1	1	1	1	1	
21	.	22117-060000	WASHER 6	1	1	1	1	1	1	
22	.	22117-080000	WASHER 8	1	1	1	1	1	1	
23	.	26106-080452	BOLT M 8X 45 PLATED	1	1	1	1	1	1	
24	.	26366-060002	NUT M 6	1	1	1	1	1	1	
25	.	26476-060142	BOLT M 6X 14,TAPPING	2	2	2	2	2	2	
26	.	106990-44660	BAND, HOSE	2	2	2	2	2	2	
27	.	114250-59050	PIPE, FUEL OIL	1	1	1	1	1	1	
28	.	114652-59300	PIPE, FUEL RETURN	1	1	1	1	1	1	
29	..	124722-59050	CLAMP 9	2	2	2	2	2	2	
30	..	114250-59060	PIPE, FUEL RETURN	1	1	1	1	1	1	
31	..	114652-59310	TUBE, PROTECT	1	1	1	1	1	1	
32	..	121750-59890	RETAINER	1	1	1	1	1	1	
33	.	114650-59810	PIPE, FUEL INJECTION	1	1	1	1	1	1	

SPEC. CODED14654-77120
D14351-77100D14351-78300
D14361-77110D14351-78350
D14362-77100D14353-78310
D14651-77110D14654-77140

Fig. 39 STARTING MOTOR & DYNAMO



+-----+
 I 1F15 I
 I (1F02) I
 +-----+
 YOOR3981

(39) STARTING MOTOR & DYNAMO

91.07.02

(A)=L75AE-DE (D)=L75AE-SE
 (B)=L90AE-DE (E)=L90AE-SE
 (C)=L100AE-DE (F)=L100AE-SE

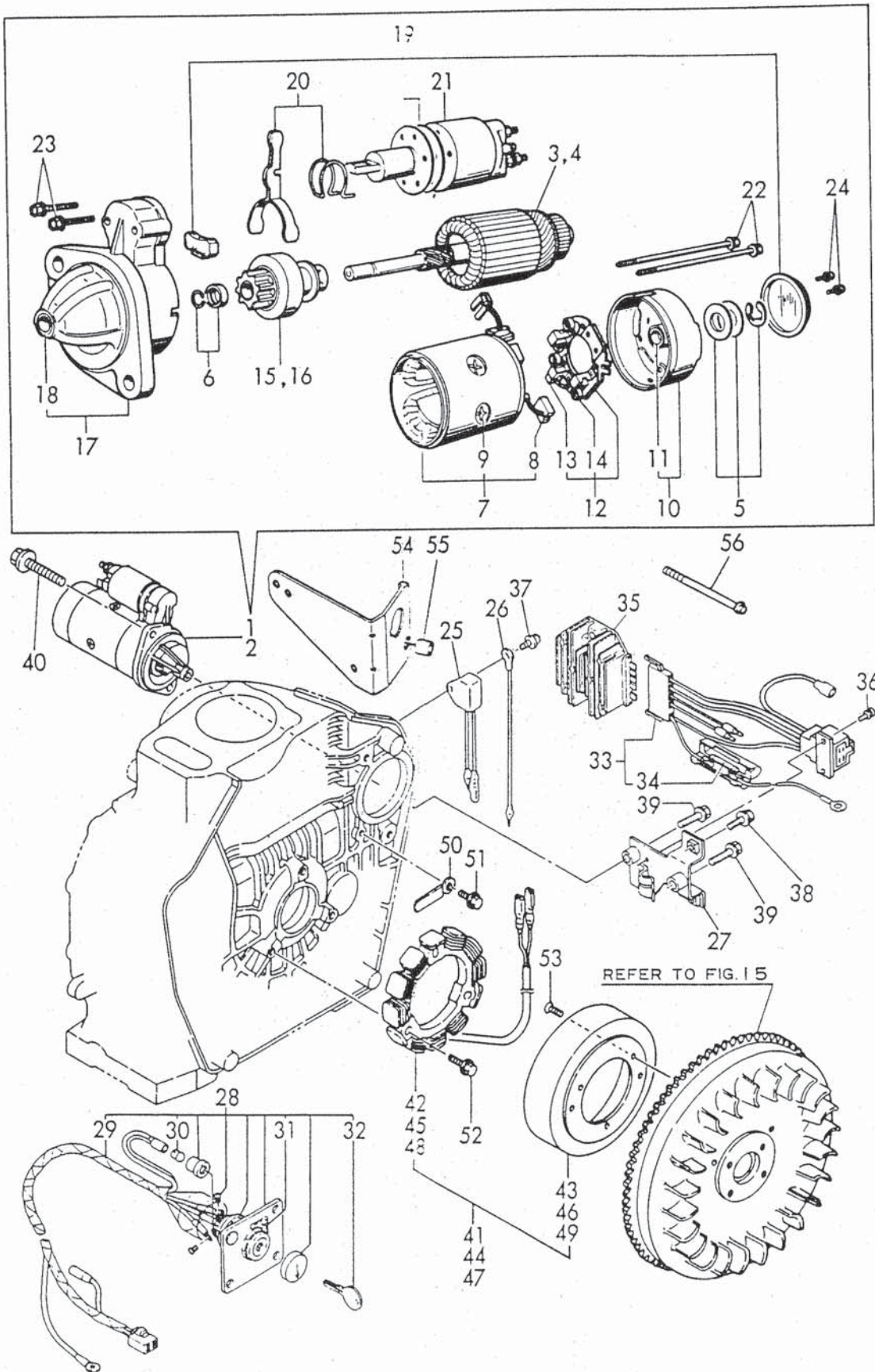
REF. NO.	LEV. 0	PART NO.	DESCRIPTION	-----Q'TY-----						I	P/U	A	R
				(A)	(B)	(C)	(D)	(E)	(F)				
1	.	114362-77010	STARTER (S114-414A)	1	1	1							
2	.	114351-77010	STARTER (S114-413A)				1	1	1				
3	..	X211461104	ARMATURE	1	1	1							
4	..	X211461008	ARMATURE				1	1	1				
5	..	X21148110	WASHER SET, THRUST	1	1	1	1	1	1				
6	..	X21147155	STOPPER SET, PINION	1	1	1	1	1	1				
7	...	X211412105	COIL ASSY, FIELD	1	1	1	1	1	1				
8	...	X21145312	BRUSH (+)	2	2	2	2	2	2				
9	...	X21143215	SCREW, CORE	4	4	4	4	4	4				
10	..	X211473002	COVER, REAR	1	1	1	1	1	1				
11	...	X21145352	METAL	1	1	1	1	1	1				
12	..	X211489001	HOLDER ASSY, BRUSH	1	1	1	1	1	1				
13	...	X21148313	BRUSH (-)	1	1	1	1	1	1				
14	...	X21149314	SPRING, BRUSH	3	3	3	3	3	3				
15	..	X211445508	PINION ASSY	1	1	1							
16	..	X211445504	PINION ASSY				1	1	1				
17	..	X211416603	HOUSING ASSY, GEAR	1	1	1	1	1	1				
18	...	X21145352	METAL	1	1	1	1	1	1				
19	..	X211478006	COVER KIT, DUST	1	1	1	1	1	1				
20	..	X211456013	LEVER KIT, SHIFT	1	1	1	1	1	1				
21	..	X211427501	SWITCH, MAGNETIC	1	1	1	1	1	1				
22	..	X211468005	BOLT, THROUGH	2	2	2	2	2	2				
23	..	X21145867	BOLT 6	2	2	2	2	2	2				
24	..	X21142835	SCREW SET	1	1	1	1	1	1				
25	.	160970-77350	RECTIFIER	1	1	1	1	1	1				
26	.	183350-77400	WIRE, LEAD	1	1	1	1	1	1				
27	.	114253-77410	BRACKET	1	1	1						(Y)	
I 27- 1	.	114385-77400	BRACKET	1	1	1					R	(Y)	
	(A=X)											
28	.	114351-77500	PANEL ASSY,KEYSWITCH	1	1	1						(H)	
29	..	114351-77700	HARNESS, WIRE	1	1	1						(H)	
30	...	29220-083200	BULB (12V/3.4W)	1	1	1						(H)	
31	..	105198-07120	LABEL, STARTER	1	1	1						(H)	
32	..	106100-77630	KEY, STARTER	1	1	1						(H)	
33	.	114351-77540	HARNESS, WIRE	1	1	1						(Y)	
34	..	29411-150000	FUSE (15A),CARTRIDGE	2	2	2						(Y)	
35	.	119660-77710	CURRENT LIMITER	1	1	1						(Y)	
36	.	26023-040102	SCREW M 4X 10	2	2	2						(Y)	
37	.	26106-060122	BOLT M 6X 12 PLATED	1	1	1						(Y)	
38	.	26106-060202	BOLT M 6X 20 PLATED	2	2	2						(Y)	
39	.	26106-060252	BOLT M 6X 25 PLATED	2	2	2	2	2	2				
I 39- 1	.	26106-060122	BOLT M 6X 12 PLATED	2	2	2	2	2	2		R		
	(A=X)											
40	.	26106-100302	BOLT M10X 30 PLATED	2	2	2	2	2	2				
41	.	114351-78250	DYNAMO ASSY	1	1	1	1	1	1				
42	..	114351-78750	STATOR ASSY	1	1	1	1	1	1				
43	..	114351-78760	WHEEL, DYNAMO	1	1	1	1	1	1				
44	.	114351-78260	DYNAMO ASSY (12V-3A)	1	1	1							
45	..	114351-78770	STATOR ASSY, (132.1MM	1	1	1						(H)	
46	..	114351-78780	WHEEL (STATOR132.1MM	1	1	1						(H)	
47	.	114351-78290	DYNAMO ASSY (12V-15A	1								(#)	
48	..	114351-78830	STATOR ASSY, (132.1MM		1							(#)	
49	..	114351-78840	WHEEL (STATOR132.1MM		1							(#)	
50	.	160710-78710	CLAMP, CORD	1	1	1	1	1	1				

** CONTINUE **

Y053609

Fig. **39** STARTING MOTOR & DYNAMO

SPEC. CODE D14654-77120
 D14351-77100 D14351-78300
 D14361-77110 D14351-78350
 D14362-77100 D14353-78310
 D14651-77110 D14654-77140



+-----+
 I 1F16 I
 I(1F02)I
 +-----+
 Y00R3981

(39) STARTING MOTOR & DYNAMO

91.07.02

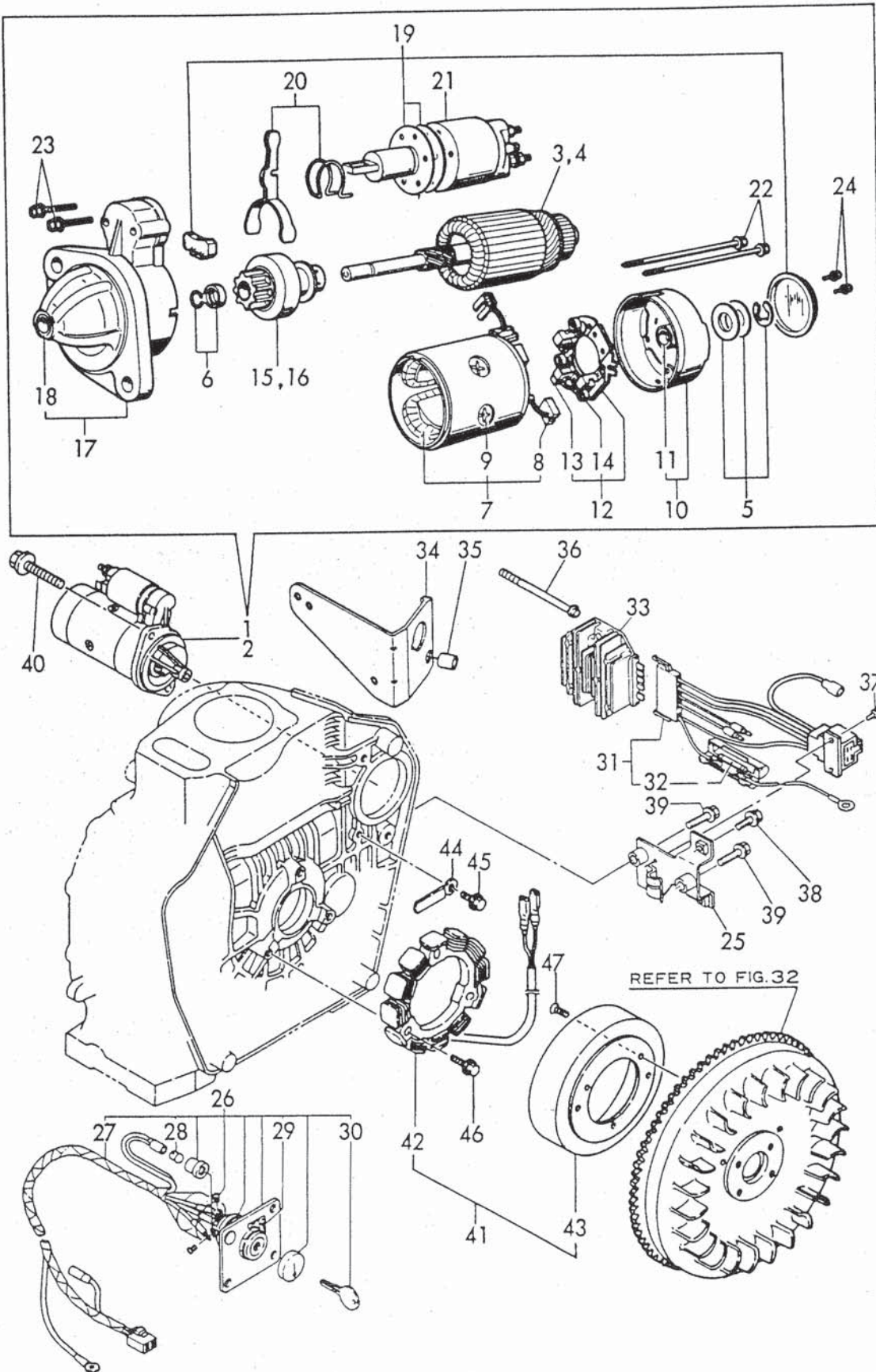
(A)=L75AE-DE (D)=L75AE-SE
 (B)=L90AE-DE (E)=L90AE-SE
 (C)=L100AE-DE (F)=L100AE-SE

REF. NO.	LEV. 0	PART NO.	DESCRIPTION	-----Q'TY-----						I P/U A R
				(A)	(B)	(C)	(D)	(E)	(F)	
51	.	26476-060142	BOLT M 6X 14,TAPPING	1	1	1	1	1	1	
52	.	26476-060202	BOLT M 6X 20,TAPPING	3	3	3	3	3	3	
53	.	26577-060142	SCREW M 6X 14	3	3	3	3	3	3	
54	.	114351-77620	BRACKET, ST.SWITCH	1	1	1	1	1	1	(%)
55	.	114351-77630	WASHER	2	2	2	2	2	2	(%)
56	.	26106-060702	BOLT M 6X 70 PLATED	2	2	2	2	2	2	(%)

----- REMARKS -----
 I(Y) FOR L90AE-DEPAC, L75AE/90AE/100AE
 I -D(E)P
 I(#) FOR L90AE-DEPAC
 I(X) OPTIONAL PARTS
 I(H) FOR L75AE/90AE/100AE-D(E)P

Fig. 40 STARTING MOTOR & DYNAMO

SPEC. CODE
 D14361-77110
 D14651-77110
 D14654-77140
 D14353-78310



+-----+
 I 1G01 I
 I (1F02) I
 +-----+
 Y00R3981

(40) STARTING MOTOR & DYNAMO

91.07.02

(A)=L75AE-DETM (D)=L75AE-SETM
 (B)=L90AE-DETM (E)=L90AE-SETM
 (C)=L100AE-DETM (F)=L100AE-SETM

REF. NO.	LEV. 0	PART NO.	DESCRIPTION	-----Q'TY-----						I P/U A R
				(A)	(B)	(C)	(D)	(E)	(F)	
1	.	114362-77010	STARTER (S114-414A)	1	1	1				
2	.	114351-77010	STARTER (S114-413A				1	1	1	
3	..	X211461104	ARMATURE	1	1	1				
4	..	X211461008	ARMATURE				1	1	1	
5	..	X21148110	WASHER SET, THRUST	1	1	1	1	1	1	
6	..	X21147155	STOPPER SET, PINION	1	1	1	1	1	1	
7	...	X211412105	COIL ASSY, FIELD	1	1	1	1	1	1	
8	...	X21145312	BRUSH (+)	2	2	2	2	2	2	
9	...	X21143215	SCREW, CORE	4	4	4	4	4	4	
10	..	X211473002	COVER, REAR	1	1	1	1	1	1	
11	...	X21145352	METAL	1	1	1	1	1	1	
12	..	X211489001	HOLDER ASSY, BRUSH	1	1	1	1	1	1	
13	...	X21148313	BRUSH (-)	1	1	1	1	1	1	
14	...	X21149314	SPRING, BRUSH	3	3	3	3	3	3	
15	..	X211445508	PINION ASSY	1	1	1				
16	..	X211445504	PINION ASSY				1	1	1	
17	..	X211416603	HOUSING ASSY, GEAR	1	1	1	1	1	1	
18	...	X21145352	METAL	1	1	1	1	1	1	
19	..	X211478006	COVER KIT, DUST	1	1	1	1	1	1	
20	..	X211456013	LEVER KIT, SHIFT	1	1	1	1	1	1	
21	..	X211427501	SWITCH, MAGNETIC	1	1	1	1	1	1	
22	..	X211468005	BOLT, THROUGH	2	2	2	2	2	2	
23	..	X21145867	BOLT 6	2	2	2	2	2	2	
24	..	X21142835	SCREW SET	1	1	1	1	1	1	
25	.	114253-77410	BRACKET	1	1	1	1	1	1	
I 25-	1	114385-77400	BRACKET	1	1	1	1	1	1	R
	(A=X)								
26	.	114351-77500	PANEL ASSY,KEYSWITCH	1	1	1	1	1	1	
27	..	114351-77700	HARNES, WIRE	1	1	1	1	1	1	
28	...	29220-083200	BULB (12V/3.4W)	1	1	1	1	1	1	
29	..	105198-07120	LABEL, STARTER	1	1	1	1	1	1	
30	..	106100-77630	KEY, STARTER	1	1	1	1	1	1	
31	.	114351-77540	HARNES, WIRE	1	1	1	1	1	1	
32	..	29411-150000	FUSE (15A),CARTRIDGE	2	2	2	2	2	2	
33	.	119660-77710	CURRENT LIMITER	1	1	1	1	1	1	
34	.	114351-77620	BRACKET, ST.SWITCH	1	1	1	1	1	1	(H)
35	.	114351-77630	WASHER	2	2	2	2	2	2	(H)
36	.	26106-060702	BOLT M 6X 70 PLATED	2	2	2	2	2	2	(H)
37	.	26023-040102	SCREW M 4X 10	2	2	2	2	2	2	
38	.	26106-060202	BOLT M 6X 20 PLATED	2	2	2	2	2	2	
39	.	26106-060252	BOLT M 6X 25 PLATED	2	2	2	2	2	2	
I 39-	1	26106-060122	BOLT M 6X 12 PLATED	2	2	2	2	2	2	N
	(A=X)								
40	.	26106-100302	BOLT M10X 30 PLATED	2	2	2	2	2	2	
41	.	114351-78260	DYNAMO ASSY (12V-3A)	1	1	1	1	1	1	
42	..	114351-78770	STATOR ASSY, (132.1MM	1	1	1	1	1	1	
43	..	114351-78780	WHEEL (STATOR132.1MM	1	1	1	1	1	1	
44	.	160710-78710	CLAMP, CORD	1	1	1	1	1	1	
45	.	26476-060142	BOLT M 6X 14,TAPPING	1	1	1	1	1	1	
46	.	26476-060202	BOLT M 6X 20,TAPPING	3	3	3	3	3	3	
47	.	26577-060142	SCREW M 6X 14	3	3	3	3	3	3	

----- REMARKS -----

I (H) OPTIONAL PARTS

Y053609

+-----+
 I 1602 I
 I (1F02) I
 +-----+
 Y00R3981

(41) TOOLS / LABELS & GASKET SET

91.07.02

(A)=L75AE-D/DE (D)=L75AE-S/SE
 (B)=L90AE-D/DE (E)=L90AE-S/SE
 (C)=L100AE-D/DE (F)=L100AE-S/SE

REF. NO.	LEV. 0	PART NO.	DESCRIPTION	-----Q'TY-----						I P/U A R
				(A)	(B)	(C)	(D)	(E)	(F)	
1	.	114250-92600	BAG, TOOL	1	1	1	1	1	1	
2	.	160330-92730	SCREWDRIVER	1	1	1	1	1	1	
3	.	28110-100120	WRENCH 10X12	1	1	1	1	1	1	
4	.	28110-140170	WRENCH 14X17	1	1	1	1	1	1	
5	.	28210-000150	FEEDER, OIL	1	1	1	1	1	1	
6	.	114250-92101	F.W. LOCKING HANDLE	1	1	1	1	1	1	(Y)
7	.	114250-92130	REMOVER, FLYWHEEL	1	1	1	1	1	1	(Y)
9	..	26116-060454	BOLT M 6X 45 PLATED	4	4	4	4	4	4	(Y)
10	..	26116-080454	BOLT M 8X 45 PLATED	3	3	3	3	3	3	(Y)
11	..	26716-060002	NUT M 6	8	8	8	8	8	8	(Y)
12	..	26716-080002	NUT M 8	6	6	6	6	6	6	(Y)
13	.	114668-92300	GUIDE, OIL SEAL	1	1	1				(Y)
14	.	114650-92300	GUIDE, OIL SEAL				1	1	1	(Y)
15	.	114650-92310	INSTALLING TOOL	1	1	1	1	1	1	(Y)
16	.	114650-92350	INSTALLING TOOL	1	1	1	1	1	1	(Y)
17	.	114570-07050	LABEL, (L75A)	1			1			
18A	.	114670-07050	LABEL, (L90A)		1			1		
18B	.	114970-07050	LABEL, (L100A)			1			1	
19	.	114250-07090	LABEL, AIR COOLED	1	1	1	1	1	1	
20A	.	114250-07110	LABEL, YANMAR	1	1	1	1	1	1	
20B	.	183250-07110	LABEL, YANMAR	1	1	1				
21	.	183250-07230	LABEL, OPERATION	1	1	1		1	1	
22	.	114268-07240	LABEL, CAUTION	1	1	1	1	1	1	
23	.	114250-07260	LABEL, OPERATION	1	1	1	1	1	1	
24	.	114268-07280	LABEL, PRECAUTION		1	1				
25	.	114250-07350	LABEL, YANMAR DIESEL	1	1	1	1	1	1	
26	.	114268-07350	LABEL, HOW TO START	1	1	1	1	1	1	
27	.	114268-07360	LABEL, HOW TO START (F		1	1				
28A	.	714589-92600	GASKET SET	1			1			
28B	.	714689-92600	GASKET SET		1			1		
28C	.	714970-92600	GASKET SET			1			1	
29A	..	114550-01340	GASKET, CYL. HEAD	1			1			
29B	..	114650-01340	GASKET, CYL. HEAD		1			1		
29C	..	114970-01340	GASKET, CYL. HEAD			1			1	
30	..	114650-01380	O-RING	1	1	1	1	1	1	
31A	..	114650-01412	GASKET, CRANK CASE	1	1	1	1	1	1	
31B	..	114650-01411	GASKET, CRANK CASE	1	1	1	1	1	1	
32	..	24311-000180	O-RING 1A P-18.0	2	2	2	2	2	2	
33	..	114250-01840	GASKET	1	1	1	1	1	1	
34	..	43400-500490	SEAL WASHER 16	2	2	2	2	2	2	
35	..	114650-11340	SEAL, VALVE STEM	2	2	2	2	2	2	
36	..	114250-11460	GASKET, NOZZLE	1	1	1	1	1	1	
37	..	114650-11310	GASKET, BONNET	1	1	1	1	1	1	
38	..	114650-12300	GASKET, AIR INTAKE	1	1	1	1	1	1	
39	..	114650-12210	GASKET, AIR CLEANER	1	1	1	1	1	1	
40	..	114650-13200	GASKET, MUFFLER	1	1	1	1	1	1	
41	..	103338-32570	O-RING	1	1	1	1	1	1	
42	..	114250-35270	GASKET, L.O. STRAINER	1	1	1	1	1	1	

----- REMARKS -----

(Y) OPTIONAL PARTS

Y053611